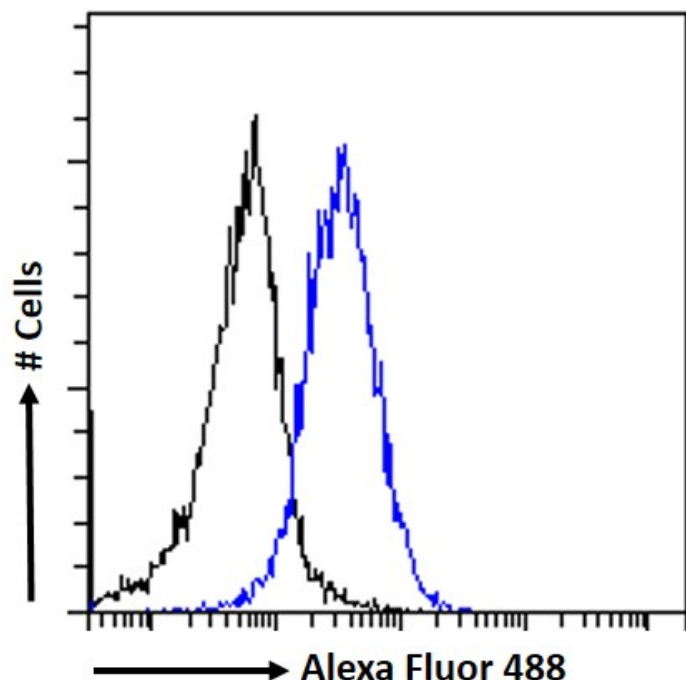


GOAT ANTI-ETV1 ANTIBODY

SKU: EB07080



SPECIFICATIONS

Formulation Supplied at 0.5 mg/ml in Tris saline, 0.02% sodium azide, pH7.3 with 0.5% bovine serum albumin.

Unit Size 100 µg

Storage Instructions Aliquot and store at -20°C. Minimize freezing and thawing.

Synonym /

Alias Names ets variant 1|MGC120534|MGC120533|MGC104699|ER81|DKFZp781L0674|HGNC:3490|ets variant gene 1|ETV1

Usage Summary **Immunofluorescence:** Strong expression of the protein seen in the nuclei of A549 cells. Recommended concentration: 10µg/ml. **Flow Cytometry:** Flow cytometric analysis of A549 cells. Recommended concentration: 10ug/ml.

Accession ID NP_004947.2; NP_001156619.1; NP_001156620.1; NP_001156621.1; NP_001156622.1; NP_001156623.1; NP_001156624.1NP_001357485.1

Blocking Peptide EBP07080

Peptide with sequence PLKIKKEPHSPCSE, from the internal region of the protein sequence according to

Immunogen	NP_004947.2; NP_001156619.1; NP_001156620.1; NP_001156621.1; NP_001156622.1; NP_001156623.1; NP_001156624.1NP_001357485.1.
Product	This antibody is expected to recognise all reported isoforms. Variants (NP_001156620.1; NP_001156621.1)
Comments	encode the same isoform.
Peptide Sequence	PLKIKKEPHSPCSE
Purification Method	Purified from goat serum by ammonium sulphate precipitation followed by antigen affinity chromatography using the immunizing peptide.
Shipping Instructions	Refrigerated
Predicted Species	Human, Mouse, Rat, Dog, Cow
Reactive Species	Human
Human Gene ID	2115
Product Grade	https://prod-vector-labs-pimcore-assets.s3.us-east-1.amazonaws.com/assets/products/image/elite_medium.png
ELISA Detection Limit	Antibody detection limit dilution 1:8000.
Application Type	Pep-ELISA, IF, FC

DOCUMENTS

- [Data Sheet](#)

GALLERY IMAGES

