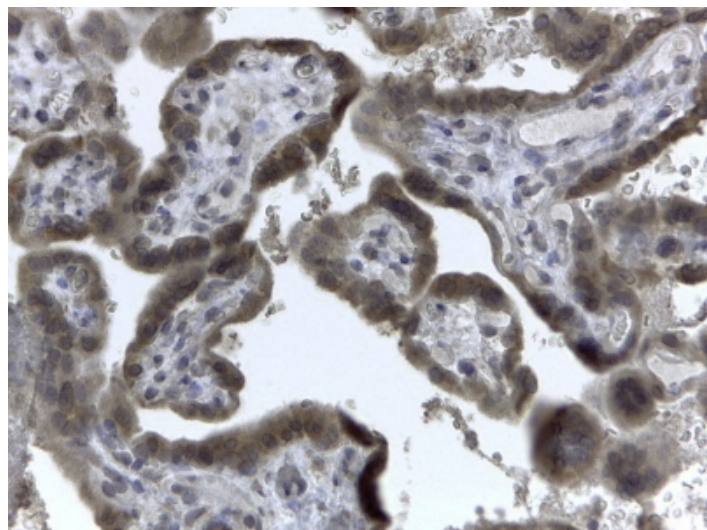


# GOAT ANTI-EVC2 / LIMBIN ANTIBODY

**SKU:** EB05911



## SPECIFICATIONS

**Formulation** Supplied at 0.5 mg/ml in Tris saline, 0.02% sodium azide, pH7.3 with 0.5% bovine serum albumin.

**Unit Size** 100 µg

**Storage Instructions** Aliquot and store at -20°C. Minimize freezing and thawing.

**Synonym /**

**Alias** limbin|Ellis van Creveld syndrome 2 (limbin)|LIMBIN|LBN|EVC2

**Names**

**Accession ID** NP\_667338.3; NP\_001159608.1

**Blocking Peptide** EBP05911

**Immunogen** Peptide with sequence C-LNAKKAMRALGMD, from the C Terminus of the protein sequence according to NP\_667338.3; NP\_001159608.1.

**Product Comments** This antibody is expected to recognise isoform 1 (NP\_667338.3) and isoform 2 (NP\_001159608.1).

**Peptide Sequence** C-LNAKKAMRALGMD

**Purification Method** Purified from goat serum by ammonium sulphate precipitation followed by antigen affinity chromatography using the immunizing peptide.

<b>Shipping Instructions</b>	Refrigerated
<b>Predicted Species</b>	Human
<b>Reactive Species</b>	Human
<b>Human Gene ID</b>	132884
<b>Product Grade</b>	<a href="https://prod-vector-labs-pimcore-assets.s3.us-east-1.amazonaws.com/assets/products/image/elite_medium.png">https://prod-vector-labs-pimcore-assets.s3.us-east-1.amazonaws.com/assets/products/image/elite_medium.png</a>
<b>IHC Results</b>	In paraffin embedded Human Placenta shows strong staining of the cytotrophoblasts. Recommended concentration, 2-4µg/ml.
<b>ELISA</b>	
<b>Detection Limit</b>	Antibody detection limit dilution 1:16000.
<b>Application Type</b>	Pep-ELISA, IHC

## DOCUMENTS

- [Data Sheet](#)

## GALLERY IMAGES

