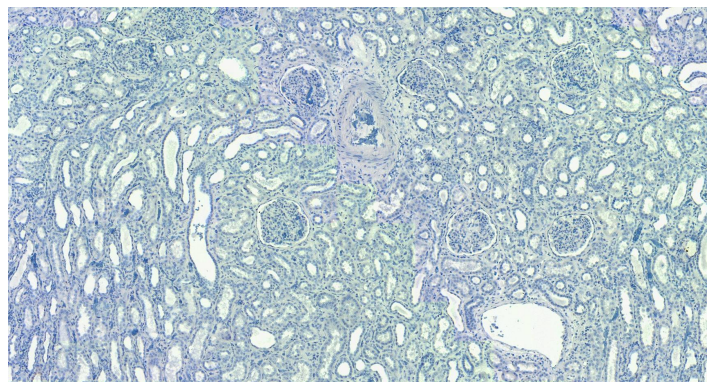


GOAT ANTI-EWS / EWSR1 ANTIBODY

SKU: EB09167



SPECIFICATIONS

Formulation Supplied at 0.5 mg/ml in Tris saline, 0.02% sodium azide, pH7.3 with 0.5% bovine serum albumin.

Unit Size 100 µg

Storage Instructions Aliquot and store at -20°C. Minimize freezing and thawing.

Synonym / Alias Names extraskeletal myxoid chondrosarcoma EWS/TEC/CHN fusion protein|bK984G1.4 (Ewing sarcoma breakpoint region 1 protein)|Ewings sarcoma EWS-Flt1 (type 1) oncogene|EWSR1/ZNF384 fusion protein|EWS/FLI fusion protein|Ewing sarcoma breakpoint region 1|EWS|EWSR1

Usage Summary Additional validation: This antibody has been successfully used in the following paper: Sikorski et al. (2018) PMID: 30377371.

Accession ID NP_053733.2; NP_005234.1; NP_001156757.1; NP_001156758.1; NP_001156759.1

Blocking Peptide EBP09167

Immunogen Peptide with sequence C-TSYDQSSYSQQNTYG, from the internal region of the protein sequence according to NP_053733.2; NP_005234.1; NP_001156757.1; NP_001156758.1; NP_001156759.1.

Product Comments This antibody is expected to recognize all five reported isoforms (NP_053733.2; NP_005234.1; NP_001156757.1; NP_001156758.1; NP_001156759.1).

Peptide Sequence C-TSYDQSSYSQQNTYG

Purification Method Purified from goat serum by ammonium sulphate precipitation followed by antigen affinity chromatography using the immunizing peptide.

Shipping Instructions Refrigerated

Predicted Species	Human, Mouse, Rat, Pig, Cow
Reactive Species	Human
Human Gene ID	2130
Mouse Gene ID	14030
Rat Gene ID	289752
Product Grade	https://prod-vector-labs-pimcore-assets.s3.us-east-1.amazonaws.com/assets/products/image/elite_medium.png
IHC Results	Paraffin embedded Human Kidney. Recommended concentration: 5-7µg/ml.
ELISA	
Detection Limit	Antibody detection limit dilution 1:64000.
Western Blot	Approx. 90kDa band observed in nuclear lysates of cell line HeLa (calculated MW of 68.5kDa according to NP_053733.1). This molecular weight is routinely observed by other sources. Recommended concentration: 0.3-1µg/ml.
Application Type	Pep-ELISA, WB, IHC

SELECTED REFERENCES

[{"pmid": 30377371, "intro": "**This antibody has been successfully used in the following paper:**", "title": "A high-throughput pipeline for validation of antibodies", "author": "Krzysztof Sikorski, Adi Mehta, Marit Inngjerdingen, Flourina Thakor, Simon Kling, Tomas Kalina, Tuula A. Nyman, Maria Ekman Stensland, Wei Zhou, Gustavo A. De Souza, Lars Holden, Jan Stuchly, Markus Templin and Fridtjof Lund-Johansen", "journal": "Nat Methods. 2018 Nov;15(11):909-912"}]

DOCUMENTS

- [Data Sheet](#)

GALLERY IMAGES

