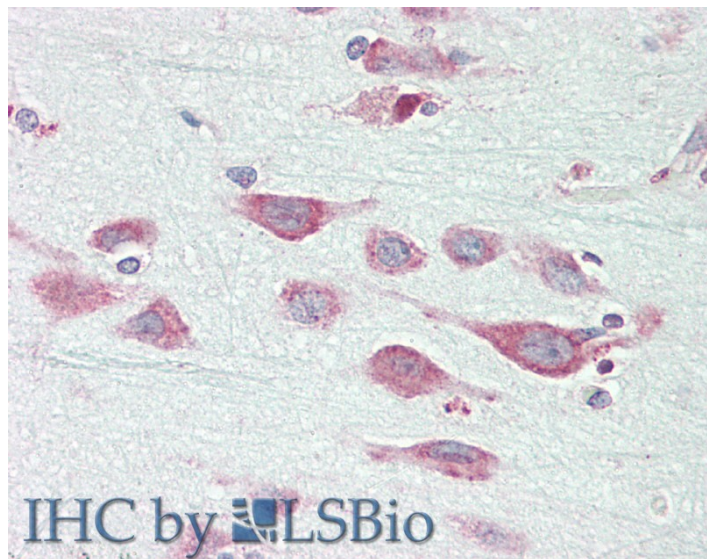


# GOAT ANTI-EXOG ANTIBODY

**SKU:** EB12764



## SPECIFICATIONS

**Formulation** Supplied at 0.5 mg/ml in Tris saline, 0.02% sodium azide, pH7.3 with 0.5% bovine serum albumin.

**Unit Size** 100 µg

**Storage Instructions** Aliquot and store at -20°C. Minimize freezing and thawing.

**Synonym / Alias Names** EXOG|endo/exonuclease (5'-3'), endonuclease G-like|ENDOGL1|ENDOGL2|ENGL|ENGL-a|ENGL-b|ENGLA|ENGLB|endo G-like 1|endonuclease G-like 1|endonuclease G-like 2|nuclease EXOG, mitochondrial

**Accession ID** NP\_005098.2; NP\_001138936.1

**Blocking Peptide** EBP12764

**Immunogen** Peptide with sequence C-KAKEQSGTQIRKP, from the C Terminus of the protein sequence according to NP\_005098.2; NP\_001138936.1.

**Product Comments** This antibody is expected to recognize both reported isoforms (NP\_005098.2; NP\_001138936.1).

**Peptide Sequence** C-KAKEQSGTQIRKP

**Purification Method** Purified from goat serum by ammonium sulphate precipitation followed by antigen affinity chromatography using the immunizing peptide.

<b>Shipping Instructions</b>	Refrigerated
<b>Predicted Species</b>	Human
<b>Reactive Species</b>	Human
<b>Human Gene ID</b>	9941
<b>Product Grade</b>	<a href="https://prod-vector-labs-pimcore-assets.s3.us-east-1.amazonaws.com/assets/products/image/elite_medium.png">https://prod-vector-labs-pimcore-assets.s3.us-east-1.amazonaws.com/assets/products/image/elite_medium.png</a>
<b>IHC Results</b>	Paraffin embedded Human Brain (Cortex). Recommended concentration: 5µg/ml.
<b>ELISA</b>	
<b>Detection Limit</b>	Antibody detection limit dilution 1:128000.
<b>Western Blot</b>	Approx 40kDa band observed in lysates of cell lines HepG2 and Jurkat (calculated MW of 41.1kDa according to NP_005098.2). Recommended concentration: 0.1-0.3µg/ml. Primary incubation was 1 hour.
<b>Application Type</b>	Pep-ELISA, WB, IHC

## DOCUMENTS

- [Data Sheet](#)

## GALLERY IMAGES

