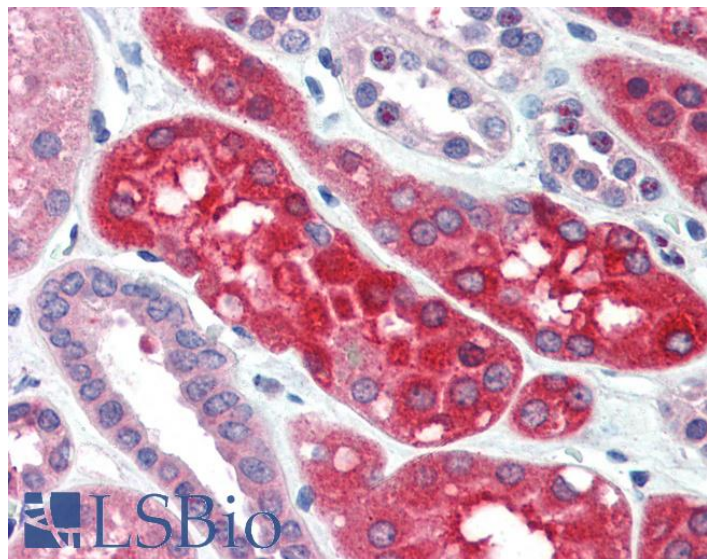


# GOAT ANTI-EZRIN / VILLIN 2 ANTIBODY

**SKU:** EB07305



## SPECIFICATIONS

**Formulation** Supplied at 0.5 mg/ml in Tris saline, 0.02% sodium azide, pH7.3 with 0.5% bovine serum albumin.

**Unit Size** 100 µg

**Storage Instructions** Aliquot and store at -20°C. Minimize freezing and thawing.

**Synonym /**

**Alias** villin 2|cytovillin|MGC1584|FLJ26216|DKFZp762H157|CVL|CVIL|VIL2|ezrin|villin 2 (ezrin)

**Names**

**Accession ID** NP\_003370.2

**Blocking Peptide** EBP07305

**Immunogen** Peptide with sequence C-QDYEEKTKKAER, from the internal region of the protein sequence according to NP\_003370.2.

**Peptide Sequence** C-QDYEEKTKKAER

**Purification Method** Purified from goat serum by ammonium sulphate precipitation followed by antigen affinity chromatography using the immunizing peptide.

**Shipping Instructions** Refrigerated

<b>Predicted Species</b>	Human, Dog
<b>Reactive Species</b>	Human
<b>Human Gene ID</b>	7430
<b>Mouse Gene ID</b>	22350
<b>Rat Gene ID</b>	54319
<b>Product Grade</b>	<a href="https://prod-vector-labs-pimcore-assets.s3.us-east-1.amazonaws.com/assets/products/image/elite_medium.png">https://prod-vector-labs-pimcore-assets.s3.us-east-1.amazonaws.com/assets/products/image/elite_medium.png</a>
<b>IHC Results</b>	Paraffin embedded Human Colon and Kidney. Recommended concentration: 3.75µg/ml.
<b>ELISA</b>	
<b>Detection Limit</b>	Antibody detection limit dilution 1:16000.
<b>Western Blot</b>	Approx 80kDa band observed in Human Placenta lysates (calculated MW of 69.4kDa according to NP_003370.2). The observed molecular weight corresponds to earlier findings in literature with different antibodies (Zhu et al, Am J Physiol Cell Physiol. 2005 Jun;288(6):C1242-54.; PMID: 15788482). Recommended concentration: 1-3µg/ml.
<b>Application Type</b>	Pep-ELISA, WB, IHC

## DOCUMENTS

- [Data Sheet](#)

## GALLERY IMAGES

