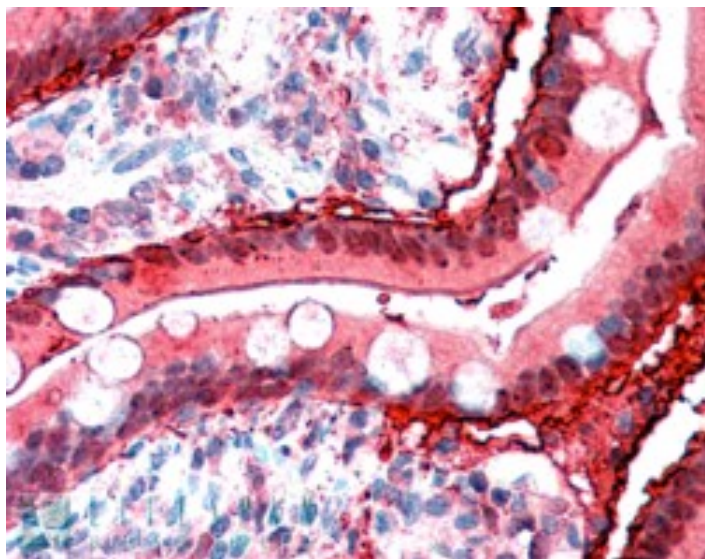


GOAT ANTI-FABP2 ANTIBODY

SKU: EB07742



SPECIFICATIONS

Formulation	Supplied at 0.5 mg/ml in Tris saline, 0.02% sodium azide, pH7.3 with 0.5% bovine serum albumin.
Unit Size	100 µg
Storage Instructions	Aliquot and store at -20°C. Minimize freezing and thawing.
Synonym / Alias Names	intestinal-type fatty acid-binding protein fatty acid-binding protein 2 intestinal fatty acid binding protein 2 Fatty acid-binding protein, intestinal MGC133132 I-FABP FABPI fatty acid binding protein 2, intestinal FABP2
Usage Summary	Flow Cytometry: Flow cytometric analysis of A431 cells. Recommended concentration: 10ug/ml.
Accession ID	NP_000125.2
Blocking Peptide	EBP07742
Immunogen	Peptide with sequence C-EGVEAKRIFKGD, from the C Terminus of the protein sequence according to NP_000125.2.
Peptide Sequence	C-EGVEAKRIFKGD
Purification Method	Purified from goat serum by ammonium sulphate precipitation followed by antigen affinity chromatography using the immunizing peptide.
Shipping Instructions	Refrigerated

Predicted Species	Human, Mouse, Rat, Dog, Pig, Cow
Reactive Species	Human
Human Gene ID	2169
Mouse Gene ID	14079
Product Grade	https://prod-vector-labs-pimcore-assets.s3.us-east-1.amazonaws.com/assets/products/image/elite_plus_medium.png
IHC Results	In paraffin embedded Human Small Intestine shows strong staining of basement membrane and weaker staining of enterocytes. Recommended concentration: 2-3µg/ml.
ELISA	
Detection Limit	Antibody detection limit dilution 1:64000.
Western Blot	Approx 15-16kDa band observed in Human Ileum and Duodenum lysates (calculated MW of 15.2kDa according to NP_000125.1). Recommended concentration: 0.001-0.003ug/ml. Primary incubation 1 hour at room temperature.
Application Type	Pep-ELISA, WB, IHC, FC

DOCUMENTS

- [Data Sheet](#)

GALLERY IMAGES

