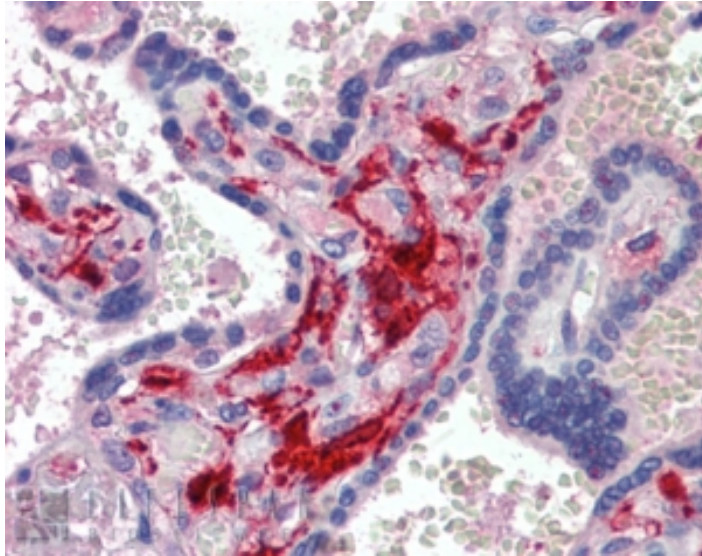




# GOAT ANTI-FACTOR XIII A (49-62) ANTIBODY

**SKU:** EB08050



## SPECIFICATIONS

**Formulation** Supplied at 0.5 mg/ml in Tris saline, 0.02% sodium azide, pH7.3 with 0.5% bovine serum albumin.

**Unit Size** 100 µg

**Storage Instructions** Aliquot and store at -20°C. Minimize freezing and thawing.

**Synonym / Alias Names** factor X|coagulation factor XIII A1 subunit|bA525O21.1 (coagulation factor XIII, A1 polypeptide)|TGase|Coagulation factor XIII, A polypeptide|Coagulation factor XIII A chain|F13A|RP11-232H4.1|coagulation factor XIII, A1 polypeptide|F13A1

**Accession ID** NP\_000120.2

**Blocking Peptide** EBP08050

**Immunogen** Peptide with sequence C-TSVHLFKERWDTNK, from the internal region of the protein sequence according to NP\_000120.2.

**Peptide Sequence** C-TSVHLFKERWDTNK

**Purification Method** Purified from goat serum by ammonium sulphate precipitation followed by antigen affinity chromatography using the immunizing peptide.

**Shipping Instructions** Refrigerated



<b>Predicted Species</b>	Human, Mouse, Rat
<b>Reactive Species</b>	Human
<b>Human Gene ID</b>	2162
<b>Mouse Gene ID</b>	74145
<b>Rat Gene ID</b>	60327
<b>Product Grade</b>	<a href="https://prod-vector-labs-pimcore-assets.s3.us-east-1.amazonaws.com/assets/products/image/elite_medium.png">https://prod-vector-labs-pimcore-assets.s3.us-east-1.amazonaws.com/assets/products/image/elite_medium.png</a>
<b>IHC Results</b>	Paraffin embedded Human Placenta and Skin (dermal inflammatory cells). Recommended concentration: 3-6µg/ml.
<b>ELISA</b>	
<b>Detection Limit</b>	Antibody detection limit dilution 1:32000.
<b>Application Type</b>	Pep-ELISA, IHC

## DOCUMENTS

- [Data Sheet](#)

## GALLERY IMAGES

