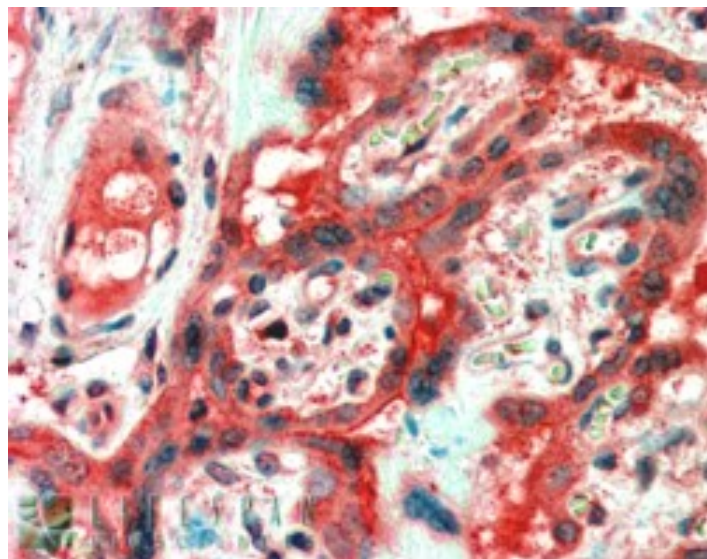


GOAT ANTI-FAIM1 ANTIBODY

SKU: EB07613



SPECIFICATIONS

Formulation Supplied at 0.5 mg/ml in Tris saline, 0.02% sodium azide, pH7.3 with 0.5% bovine serum albumin.

Unit Size 100 µg

Storage Instructions Aliquot and store at -20°C. Minimize freezing and thawing.

Synonym /

Alias Fas apoptotic inhibitory molecule|FAIM|FAIM1

Names

Accession ID NP_001028202.1; NP_001028203.1; NP_001028204.1; NP_060617.1

Blocking Peptide EBP07613

Immunogen Peptide with sequence C-KKYMEDRSKTTN, from the internal region of the protein sequence according to NP_001028202.1; NP_001028203.1; NP_001028204.1; NP_060617.1.

Product Comments This antibody is expected to recognise all reported isoforms (NP_001028202.1; NP_001028203.1; NP_001028204.1; NP_060617.1).

Peptide Sequence C-KKYMEDRSKTTN

Purification Method Purified from goat serum by ammonium sulphate precipitation followed by antigen affinity chromatography using the immunizing peptide.

Shipping Instructions	Refrigerated
Predicted Species	Human, Mouse, Rat, Dog
Reactive Species	Human
Human Gene ID	55179
Mouse Gene ID	23873
Rat Gene ID	140930
Product Grade	https://prod-vector-labs-pimcore-assets.s3.us-east-1.amazonaws.com/assets/products/image/elite_medium.png
IHC Results	In paraffin embedded Human Placenta shows cytoplasm staining of trophoblasts. Recommended concentration, 2-3µg/ml.
ELISA	
Detection Limit	Antibody detection limit dilution 1:32000.
Western Blot	Approx 25kDa band observed in Human Lymph Node lysates (calculated MW of 24.0kDa according to NP_001028202.1). Recommended concentration: 0.5-1µg/ml.
Application Type	Pep-ELISA, WB, IHC

DOCUMENTS

- [Data Sheet](#)

GALLERY IMAGES

