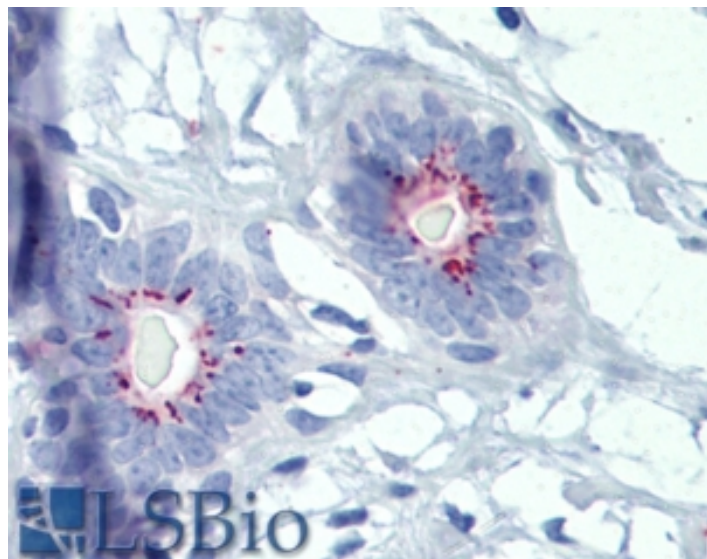


# GOAT ANTI-FALL39 PRECURSOR ANTIBODY

**SKU:** EB08576



## SPECIFICATIONS

**Formulation** Supplied at 0.5 mg/ml in Tris saline, 0.02% sodium azide, pH7.3 with 0.5% bovine serum albumin.

**Unit Size** 100 µg

**Storage Instructions** Aliquot and store at -20°C. Minimize freezing and thawing.

**Synonym /**

**Alias** LL37|HSD26|FALL39|FALL-39|CAP18|cathelicidin antimicrobial peptide|CAMP

**Names**

**Accession ID** NP\_004336.2

**Blocking Peptide** EBP08576

**Immunogen** Peptide with sequence KETVCPRTTQQSP, from the internal region of the protein sequence according to NP\_004336.2.

**Peptide Sequence** KETVCPRTTQQSP

**Purification Method** Purified from goat serum by ammonium sulphate precipitation followed by antigen affinity chromatography using the immunizing peptide.

**Shipping Instructions** Refrigerated

<b>Predicted Species</b>	Human, Cow
<b>Reactive Species</b>	Human
<b>Human Gene ID</b>	820
<b>Product Grade</b>	<a href="https://prod-vector-labs-pimcore-assets.s3.us-east-1.amazonaws.com/assets/products/image/elite_medium.png">https://prod-vector-labs-pimcore-assets.s3.us-east-1.amazonaws.com/assets/products/image/elite_medium.png</a>
<b>IHC Results</b>	In paraffin embedded Human Breast shows distinct staining at the luminal side of ductal epithelial cells. Recommended concentration, 3-5µg/ml.
<b>ELISA</b>	
<b>Detection Limit</b>	Antibody detection limit dilution 1:2000.
<b>Application Type</b>	Pep-ELISA, IHC

## DOCUMENTS

- [Data Sheet](#)

## GALLERY IMAGES

