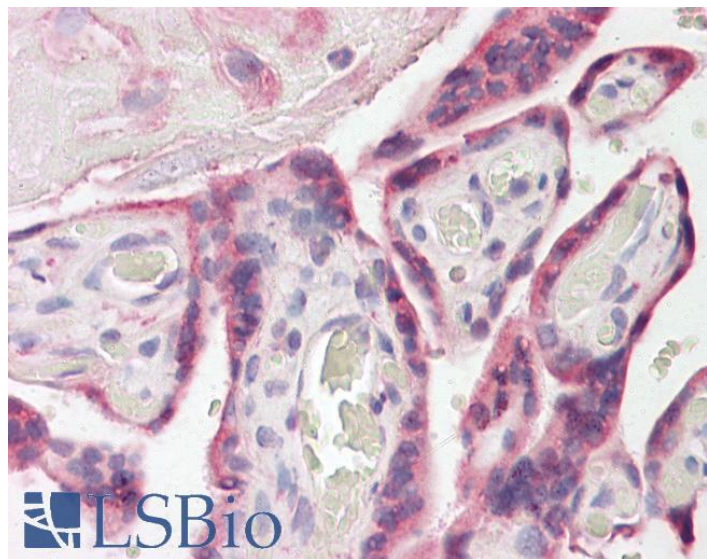


GOAT ANTI-ESYT1 ANTIBODY

SKU: EB08321



SPECIFICATIONS

Formulation Supplied at 0.5 mg/ml in Tris saline, 0.02% sodium azide, pH7.3 with 0.5% bovine serum albumin.

Unit Size 100 µg

Storage Instructions Aliquot and store at -20°C. Minimize freezing and thawing.

Synonym /

Alias ESYT1|MBC2|FAM62A

Names

Accession ID NP_056107.1; NP_001171725.1

Blocking Peptide EBP08321

Immunogen Peptide with sequence C-QKKRTLSPEFNER, from the internal region of the protein sequence according to NP_056107.1; NP_001171725.1.

Peptide Sequence C-QKKRTLSPEFNER

Purification Method Purified from goat serum by ammonium sulphate precipitation followed by antigen affinity chromatography using the immunizing peptide.

Shipping Instructions Refrigerated

Predicted Species	Human, Mouse, Rat, Dog, Cow
Reactive Species	Human
Human Gene ID	23344
Mouse Gene ID	23943
Rat Gene ID	29579
Product Grade	https://prod-vector-labs-pimcore-assets.s3.us-east-1.amazonaws.com/assets/products/image/elite_medium.png
IHC Results	Paraffin embedded Human Placenta. Recommended concentration: 3.75µg/ml.
ELISA	
Detection Limit	Antibody detection limit dilution 1:8000.
Application Type	Pep-ELISA, IHC

DOCUMENTS

- [Data Sheet](#)

GALLERY IMAGES

