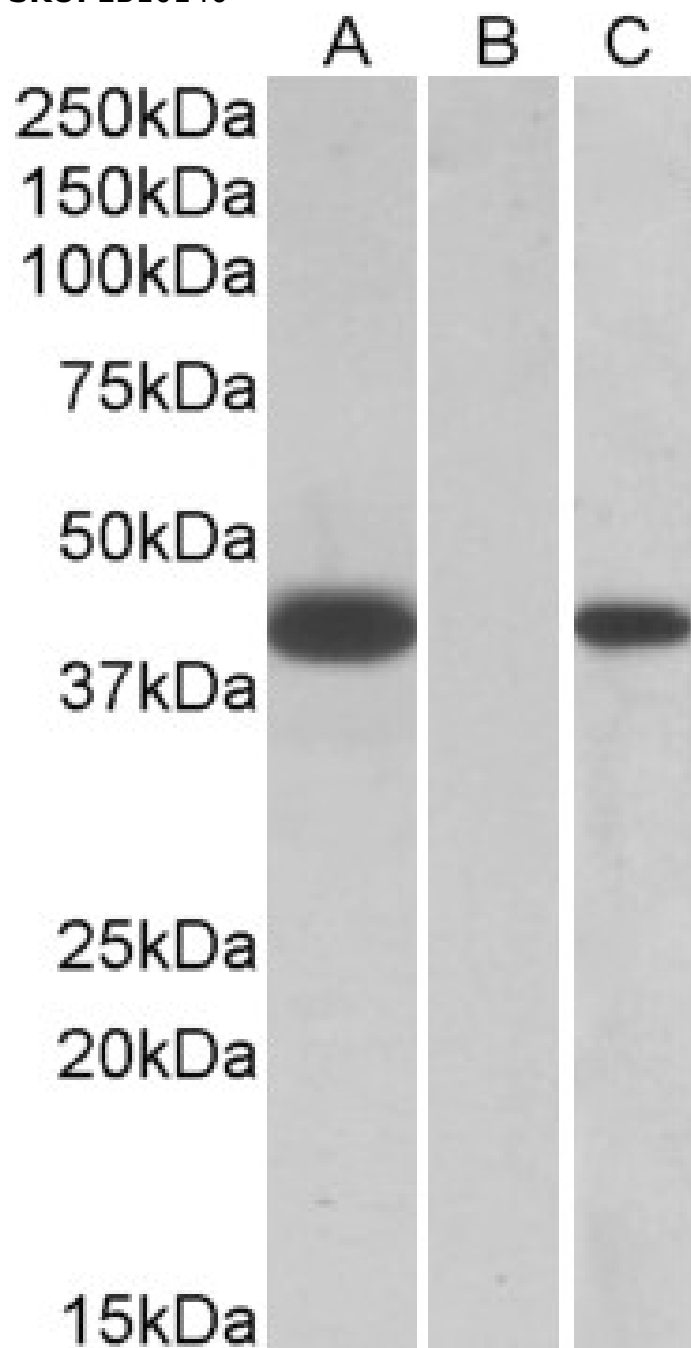


## GOAT ANTI-FANCF (AA217-228) ANTIBODY

SKU: EB10140



## SPECIFICATIONS

<b>Formulation</b>	Supplied at 0.5 mg/ml in Tris saline, 0.02% sodium azide, pH7.3 with 0.5% bovine serum albumin.
<b>Unit Size</b>	100 µg
<b>Storage</b>	Aliquot and store at -20°C. Minimize freezing and thawing.
<b>Instructions</b>	
<b>Synonym /</b>	
<b>Alias</b>	FANCF MGC126856 Fanconi anemia, complementation group F FAF
<b>Names</b>	
<b>Accession ID</b>	NP_073562.1
<b>Blocking Peptide</b>	EBP10140
<b>Immunogen</b>	Peptide with sequence C-RPQEELEPGIHK, from the internal region of the protein sequence according to NP_073562.1.
<b>Peptide Sequence</b>	C-RPQEELEPGIHK
<b>Purification Method</b>	Purified from goat serum by ammonium sulphate precipitation followed by antigen affinity chromatography using the immunizing peptide.
<b>Shipping Instructions</b>	Refrigerated
<b>Predicted Species</b>	Human
<b>Reactive Species</b>	Human
<b>Human Gene ID</b>	2188
<b>Product Grade</b>	<a href="https://prod-vector-labs-pimcore-assets.s3.us-east-1.amazonaws.com/assets/products/image/elite_medium.png">https://prod-vector-labs-pimcore-assets.s3.us-east-1.amazonaws.com/assets/products/image/elite_medium.png</a>
<b>ELISA</b>	
<b>Detection Limit</b>	Antibody detection limit dilution 1:16000.
<b>Western Blot</b>	In transfected HEK293 transiently expressing full-length Human FANCF (myc and DYKDDDDK tagged), a band of approx. 40kDa was observed. No bands were observed in mock-transfected HEK293 and the same band was observed using anti-myc tag antibody. Recommended concentration, 0.2-1µg/ml.
<b>Application Type</b>	Pep-ELISA, WB-Trf

## SELECTED REFERENCES

[{"pmid": 32075772, "intro": "**This antibody has been successfully used in the following paper:**", "title": "Cooperation of the ATM and Fanconi Anemia/BRCA Pathways in Double-Strand Break End Resection.", "author": "Mu-Yan Cai, Connor E. Dunn, Wenxu Chen, Bose S. Kochupurakkal, Huy Nguyen, Lisa A. Moreau, Geoffrey I. Shapiro, Kalindi Parmar, David Kozono, and Alan D. D'Andrea", "journal": "Cell Rep. 2020 Feb 18; 30(7): 2402-2415.e5."}]

## DOCUMENTS

- [Data Sheet](#)

## GALLERY IMAGES

