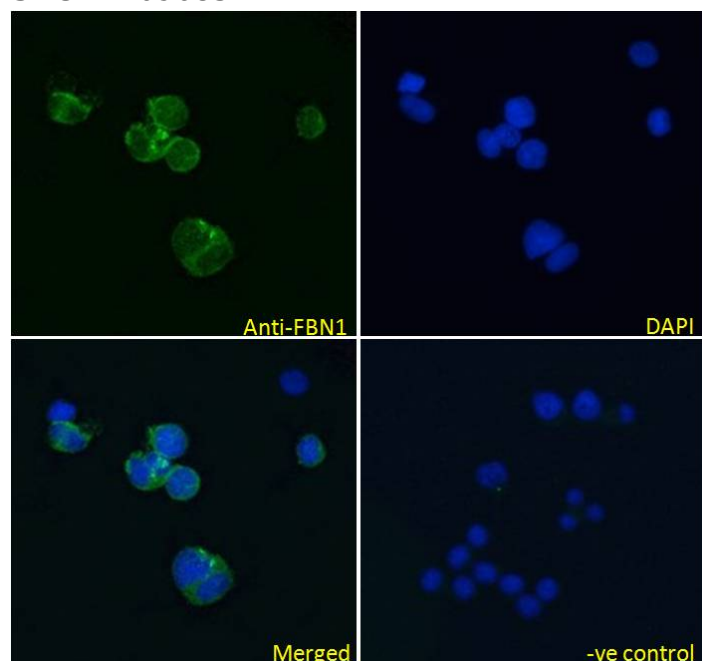


GOAT ANTI-FBN1 ANTIBODY

SKU: EB09683



SPECIFICATIONS

Formulation Supplied at 0.5 mg/ml in Tris saline, 0.02% sodium azide, pH7.3 with 0.5% bovine serum albumin.

Unit Size 100 µg

Storage Instructions Aliquot and store at -20°C. Minimize freezing and thawing.

Synonym /

Alias Names fibrillin 15|WMS|SGS|OCTD|MFS1|MASS|FBN|fibrillin 1|FBN1

Usage Summary **Immunofluorescence:** Strong expression of the protein seen in the nuclei of U251 cells. Recommended concentration: 10µg/ml. Strong expression of the protein seen in the cytoplasm of A431 and Jurkat cells. Recommended concentration: 10µg/ml.

Accession ID NP_000129.3

Blocking Peptide EBP09683

Immunogen Peptide with sequence C-DASNIEDQSETEAN, from the Internal region of the protein sequence according to NP_000129.3.

Peptide Sequence	C-DASNIEDQSETEAN
Purification Method	Purified from goat serum by ammonium sulphate precipitation followed by antigen affinity chromatography using the immunizing peptide.
Shipping Instructions	Refrigerated
Predicted Species	Human, Mouse, Rat, Dog, Cow
Reactive Species	Human
Human Gene ID	2200
Mouse Gene ID	14118
Rat Gene ID	83727
Product Grade	https://prod-vector-labs-pimcore-assets.s3.us-east-1.amazonaws.com/assets/products/image/elite_medium.png
ELISA Detection Limit	Antibody detection limit dilution 1:2000.
Application Type	Pep-ELISA, IF

DOCUMENTS

- [Data Sheet](#)

GALLERY IMAGES

