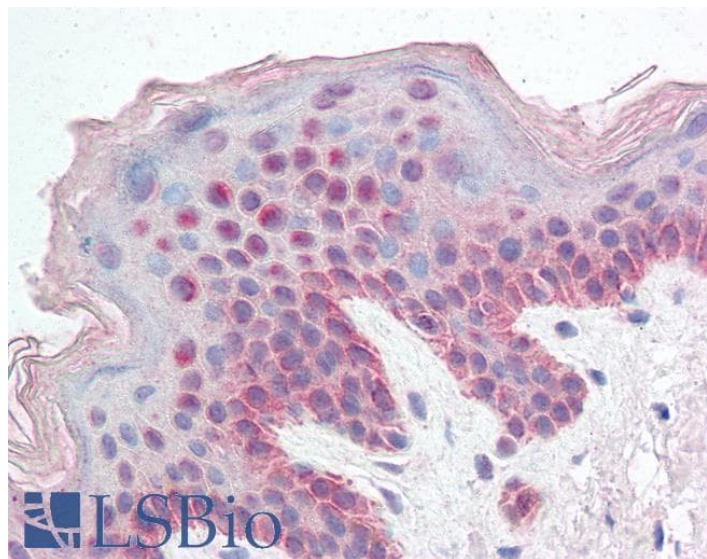


GOAT ANTI-FBXL10 / PCCX2 ANTIBODY

SKU: EB06048



SPECIFICATIONS

Formulation Supplied at 0.5 mg/ml in Tris saline, 0.02% sodium azide, pH7.3 with 0.5% bovine serum albumin.

Unit Size 100 µg

Storage Instructions Aliquot and store at -20°C. Minimize freezing and thawing.

Synonym / Alias Names jumonji C domain-containing histone demethylase 1B|protein containing CXXC domain 2|JEMMA (Jumonji domain, EMSY-interactor, methyltransferase motif) protein|PCCX2|JHDM1B|Fbl10|CXXC2|F-box and leucine-rich repeat protein 10|FBXL10|FBL10|lysine (K)-specific demethylase 2B|KDM2B

Accession ID NP_115979.3

Blocking Peptide EBP06048

Immunogen Peptide with sequence C-FGQVEEKLLQKLS, from the C Terminus of the protein sequence according to NP_115979.3.

Product Comments This antibody is expected to recognize isoform a (NP_115979.3) only.

Peptide Sequence C-FGQVEEKLLQKLS

Purification Method Purified from goat serum by ammonium sulphate precipitation followed by antigen affinity chromatography using the immunizing peptide.

Shipping Instructions	Refrigerated
Predicted Species	Human, Mouse, Rat, Dog
Reactive Species	Human
Human Gene ID	84678
Mouse Gene ID	30841
Rat Gene ID	304495
Product Grade	https://prod-vector-labs-pimcore-assets.s3.us-east-1.amazonaws.com/assets/products/image/elite_medium.png
IHC Results	Paraffin embedded Human Skin. Recommended concentration: 5-7µg/ml.
ELISA	
Detection Limit	Antibody detection limit dilution 1:32000.
Application Type	Pep-ELISA, IHC

DOCUMENTS

- [Data Sheet](#)

GALLERY IMAGES

