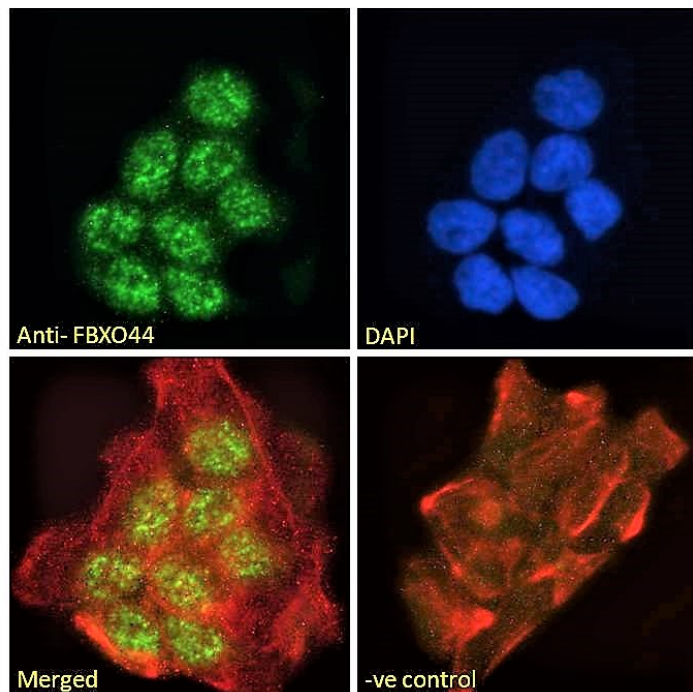


GOAT ANTI-FBXO44 ANTIBODY

SKU: EB06060



SPECIFICATIONS

Formulation Supplied at 0.5 mg/ml in Tris saline, 0.02% sodium azide, pH7.3 with 0.5% bovine serum albumin.

Unit Size 100 µg

Storage Instructions Aliquot and store at -20°C. Minimize freezing and thawing.

Synonym /

Alias Names F-box protein 44|F-box protein FBX30|F-box gene 3|MGC14140|Fbxo6a|Fbx44|FBX30|FBG3

Usage Summary **Immunofluorescence:** Strong expression of the protein seen in the nuclei of A431 and U2OS cells. Recommended concentration: 10µg/ml. **Flow Cytometry:** Flow cytometric analysis of A431 cells. Recommended concentration: 10ug/ml.

Accession ID NP_904319.1; NP_001317284.1

Blocking Peptide EBP06060

Immunogen	Peptide with sequence C-AALTPPEPPSAEP, from the C Terminus of the protein sequence according to NP_904319.1; NP_001317284.1.
Peptide Sequence	C-AALTPPEPPSAEP
Purification Method	Purified from goat serum by ammonium sulphate precipitation followed by antigen affinity chromatography using the immunizing peptide.
Shipping Instructions	Refrigerated
Predicted Species	Human
Reactive Species	Human
Human Gene ID	93611
Product Grade	https://prod-vector-labs-pimcore-assets.s3.us-east-1.amazonaws.com/assets/products/image/elite_medium.png
ELISA Detection Limit	Antibody detection limit dilution 1:8000.
Western Blot	Preliminary testing showed a band at approx 26kDa in Human Kidney lysate after 2µg/ml antibody staining (calculated MW of 25.7kDa according to NP_904319.1). Primary incubation 1 hour at room temperature.
Application Type	Pep-ELISA, IF, FC

DOCUMENTS

- [Data Sheet](#)

GALLERY IMAGES

