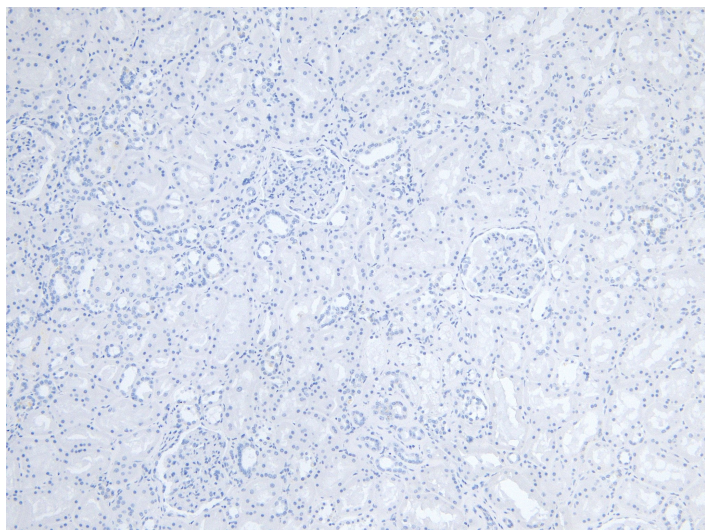


# GOAT ANTI-FCER1A (AA177-189) ANTIBODY

**SKU:** EB12554



## SPECIFICATIONS

**Formulation** Supplied at 0.5 mg/ml in Tris saline, 0.02% sodium azide, pH7.3 with 0.5% bovine serum albumin.

**Unit Size** 100 µg

**Storage Instructions** Aliquot and store at -20°C. Minimize freezing and thawing.

**Synonym / Alias Names** immunoglobulin E receptor, high-affinity, of mast cells, alpha polypeptide| IgE Fc receptor subunit alpha| high affinity immunoglobulin epsilon receptor subunit alpha| high affinity immunoglobulin epsilon receptor alpha-subunit| Fc-epsilon RI-alpha| Fc epsilon RI alpha-chain| Fc IgE receptor, alpha polypeptide| FCER1| FCE1A| alpha polypeptide| Fc fragment of IgE, high affinity I, receptor for|FCER1A

**Accession ID** NP\_001992.1

**Blocking Peptide** EBP12554

**Immunogen** Peptide with sequence C-TGKVVQLDYESEP, from the internal region of the protein sequence according to NP\_001992.1.

**Peptide Sequence** C-TGKVVQLDYESEP

**Purification Method** Purified from goat serum by ammonium sulphate precipitation followed by antigen affinity chromatography using the immunizing peptide.

**Shipping Instructions** Refrigerated

<b>Predicted Species</b>	Human
<b>Reactive Species</b>	Human
<b>Human Gene ID</b>	2205
<b>Product Grade</b>	<a href="https://prod-vector-labs-pimcore-assets.s3.us-east-1.amazonaws.com/assets/products/image/elite_medium.png">https://prod-vector-labs-pimcore-assets.s3.us-east-1.amazonaws.com/assets/products/image/elite_medium.png</a>
<b>IHC Results</b>	Paraffin embedded Human Kidney. Recommended concentration: 6µg/ml.
<b>ELISA Detection Limit</b>	Antibody detection limit dilution 1:128000.
<b>Western Blot</b>	Preliminary testing showed a band at approx. 55kDa in Human Lung lysate, and approx. 50kDa in Human Heart lysate after 3µg/ml antibody staining (calculated MW of 29.6kDa according to NP_001992.1). These molecular weights are observed by other commercial sources, and were blocked by incubation with the immunizing peptide. Primary incubation 1 hour at room temperature.
<b>Application Type</b>	Pep-ELISA, IHC

## DOCUMENTS

- [Data Sheet](#)

## GALLERY IMAGES

