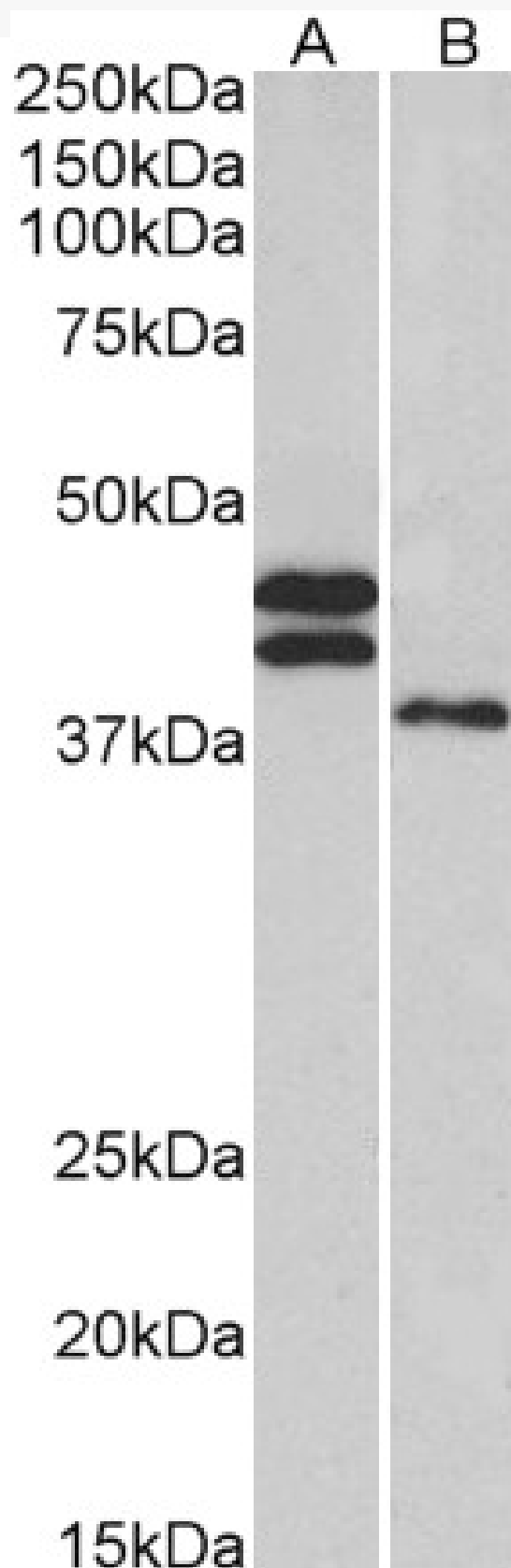


GOAT ANTI-FCRL1 (AA165-177) ANTIBODY

SKU: EB12446



SPECIFICATIONS

Formulation Supplied at 0.5 mg/ml in Tris saline, 0.02% sodium azide, pH7.3 with 0.5% bovine serum albumin.

Unit Size 100 µg

Storage Instructions Aliquot and store at -20°C. Minimize freezing and thawing.

Synonym / Alias Names immunoglobulin superfamily Fc receptor, gp42|immune receptor translocation-associated protein 5|hIFGP1|fcR-like protein 1|fc receptor homolog 1|IFGP family protein 1|Fc receptor-like protein 1|IRTA5|IFGP1|FCRH1|CD307a|Fc receptor-like 1|FCRL1

Accession ID NP_443170.1; NP_001152869.1; NP_001152870.1

Blocking Peptide EBP12446

Immunogen Peptide with sequence C-TAEYEIPSVRES D, from the internal region of the protein sequence according to NP_443170.1; NP_001152869.1; NP_001152870.1.

Product Comments This antibody is expected to recognize all reported isoforms (NP_443170.1; NP_001152869.1; NP_001152870.1).

Peptide Sequence C-TAEYEIPSVRES D

Purification Method Purified from goat serum by ammonium sulphate precipitation followed by antigen affinity chromatography using the immunizing peptide.

Shipping Instructions Refrigerated

Predicted Species Human

Reactive Species Human

Human Gene ID 115350

Product Grade https://prod-vector-labs-pimcore-assets.s3.us-east-1.amazonaws.com/assets/products/image/elite_medium.png

ELISA Detection Limit Antibody detection limit dilution 1:64000.

Western Blot Approx 45 + 40kDa bands observed in Human Heart lysates and 38kDa in Human Liver lysates (calculated MW of 46.9kDa according to NP_443170.1 and of 40.4kDa according to NP_001152869.1). Recommended concentration: 0.3-1µg/ml.

Application Type Pep-ELISA, WB

DOCUMENTS

- [Data Sheet](#)

GALLERY IMAGES

