



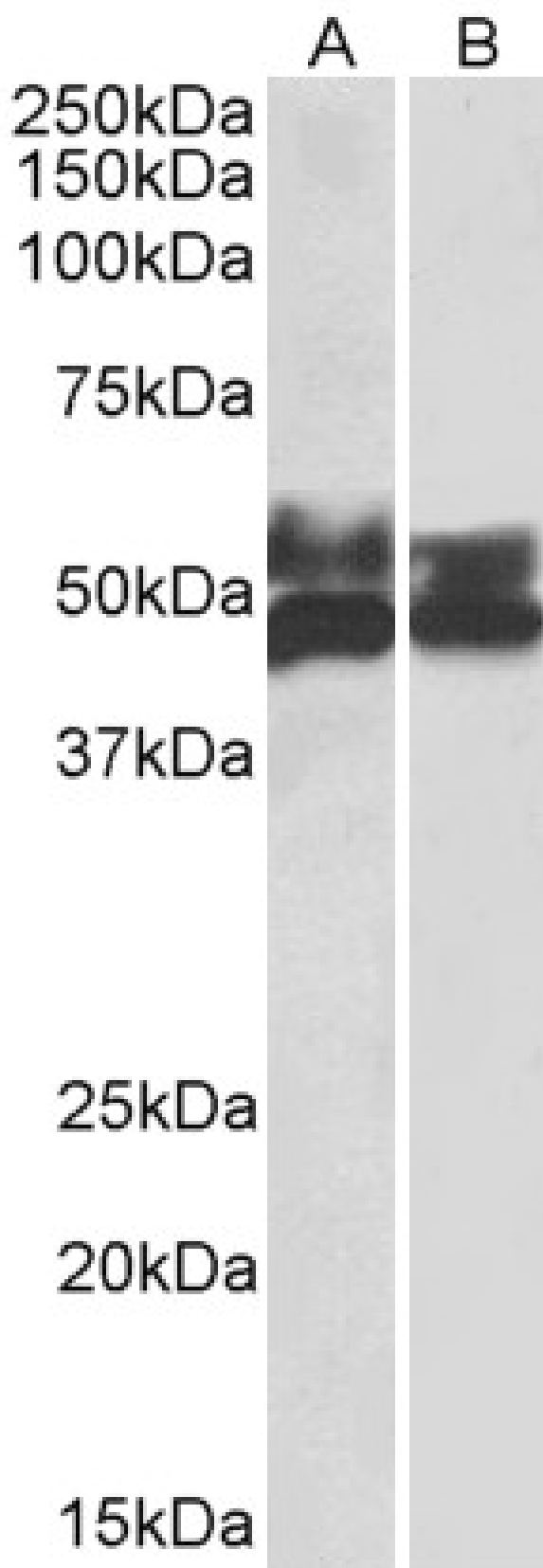
www.everestbiotech.com

Email: customerservice@vectorlabs.com

Telephone: [\(650\) 697-3600](tel:(650)697-3600)

GOAT ANTI-FCRL1 ANTIBODY

SKU: EB12445





SPECIFICATIONS

Formulation	Supplied at 0.5 mg/ml in Tris saline, 0.02% sodium azide, pH7.3 with 0.5% bovine serum albumin.
Unit Size	100 µg
Storage Instructions	Aliquot and store at -20°C. Minimize freezing and thawing.
Synonym / Alias Names	FCRL1 Fc receptor-like 1 CD307a FCRH1 IFGP1 IRTA5 Fc receptor-like protein 1 IFGP family protein 1 fc receptor homolog 1 fcR-like protein 1 hIFGP1 immune receptor translocation-associated protein 5 immunoglobulin superfamily Fc receptor, gp42
Accession ID	NP_443170.1; NP_001152870.1
Blocking Peptide	EBP12445
Immunogen	Peptide with sequence C-SRLRKANITDVD, from the C Terminus of the protein sequence according to NP_443170.1; NP_001152870.1.
Product Comments	This antibody is expected to recognize isoform 1 (NP_443170.1) and isoform 3 (NP_001152870.1).
Peptide Sequence	C-SRLRKANITDVD
Purification Method	Purified from goat serum by ammonium sulphate precipitation followed by antigen affinity chromatography using the immunizing peptide.
Shipping Instructions	Refrigerated
Predicted Species	Human
Reactive Species	Human
Human Gene ID	115350
Product Grade	https://prod-vector-labs-pimcore-assets.s3.us-east-1.amazonaws.com/assets/products/image/elite_medium.png
ELISA Detection Limit	Antibody detection limit dilution 1:64000.
Western Blot	Approx 55+48kDa bands observed in Human Tonsil and Thymus lysates (calculated MW of 46.9kDa according to NP_443170.1). The observed molecular weights correspond to the glycosylated forms. Recommended concentration: 0.3-1µg/ml.
Application Type	Pep-ELISA, WB



DOCUMENTS

- [Data Sheet](#)

GALLERY IMAGES

