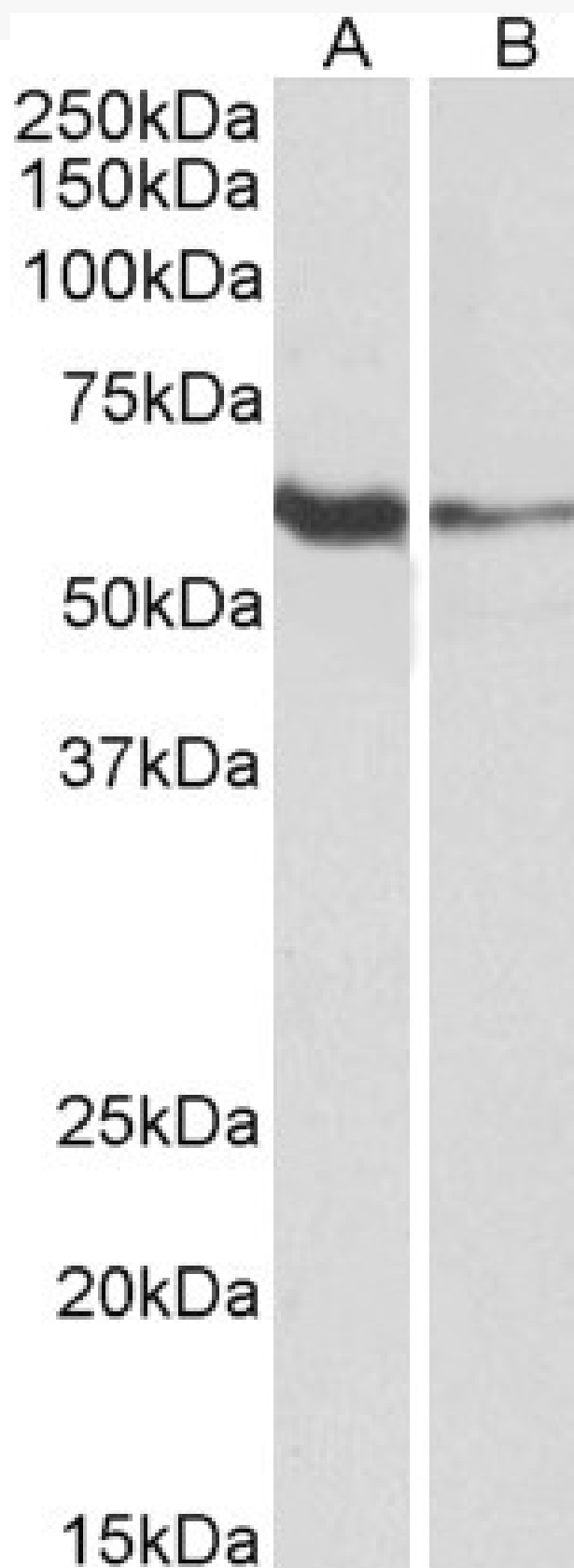


# GOAT ANTI-FCRL2 (AA92-104) ANTIBODY

**SKU:** EB12448



## SPECIFICATIONS

<b>Formulation</b>	Supplied at 0.5 mg/ml in Tris saline, 0.02% sodium azide, pH7.3 with 0.5% bovine serum albumin.
<b>Unit Size</b>	100 µg
<b>Storage Instructions</b>	Aliquot and store at -20°C. Minimize freezing and thawing.
<b>Synonym / Alias Names</b>	FCRL2 Fc receptor-like 2 CD307b FCRH2 IFGP4 IRTA4 SPAP1 SPAP1A SPAP1B SPAP1C Fc receptor-like protein 2 IFGP family protein 4 SH2 domain containing phosphatase anchor protein 1 SH2 domain-containing phosphatase anchor protein 1 fc receptor h
<b>Accession ID</b>	NP_110391.2
<b>Blocking Peptide</b>	EBP12448
<b>Immunogen</b>	Peptide with sequence C-DKTSNIVKIKVQE, from the internal region of the protein sequence according to NP_110391.2.
<b>Peptide Sequence</b>	C-DKTSNIVKIKVQE
<b>Purification Method</b>	Purified from goat serum by ammonium sulphate precipitation followed by antigen affinity chromatography using the immunizing peptide.
<b>Shipping Instructions</b>	Refrigerated
<b>Predicted Species</b>	Human
<b>Reactive Species</b>	Human
<b>Human Gene ID</b>	79368
<b>Product Grade</b>	<a href="https://prod-vector-labs-pimcore-assets.s3.us-east-1.amazonaws.com/assets/products/image/elite_medium.png">https://prod-vector-labs-pimcore-assets.s3.us-east-1.amazonaws.com/assets/products/image/elite_medium.png</a>
<b>ELISA</b>	
<b>Detection Limit</b>	Antibody detection limit dilution 1:16000.
<b>Western Blot</b>	Approx 60kDa band observed in lysates of Human Tonsil and of cell line Daudi (calculated MW of 55.5kDa according to NP_110391.2). Recommended concentration: 1-3µg/ml.
<b>Application Type</b>	Pep-ELISA, WB

## DOCUMENTS

- [Data Sheet](#)

## GALLERY IMAGES

