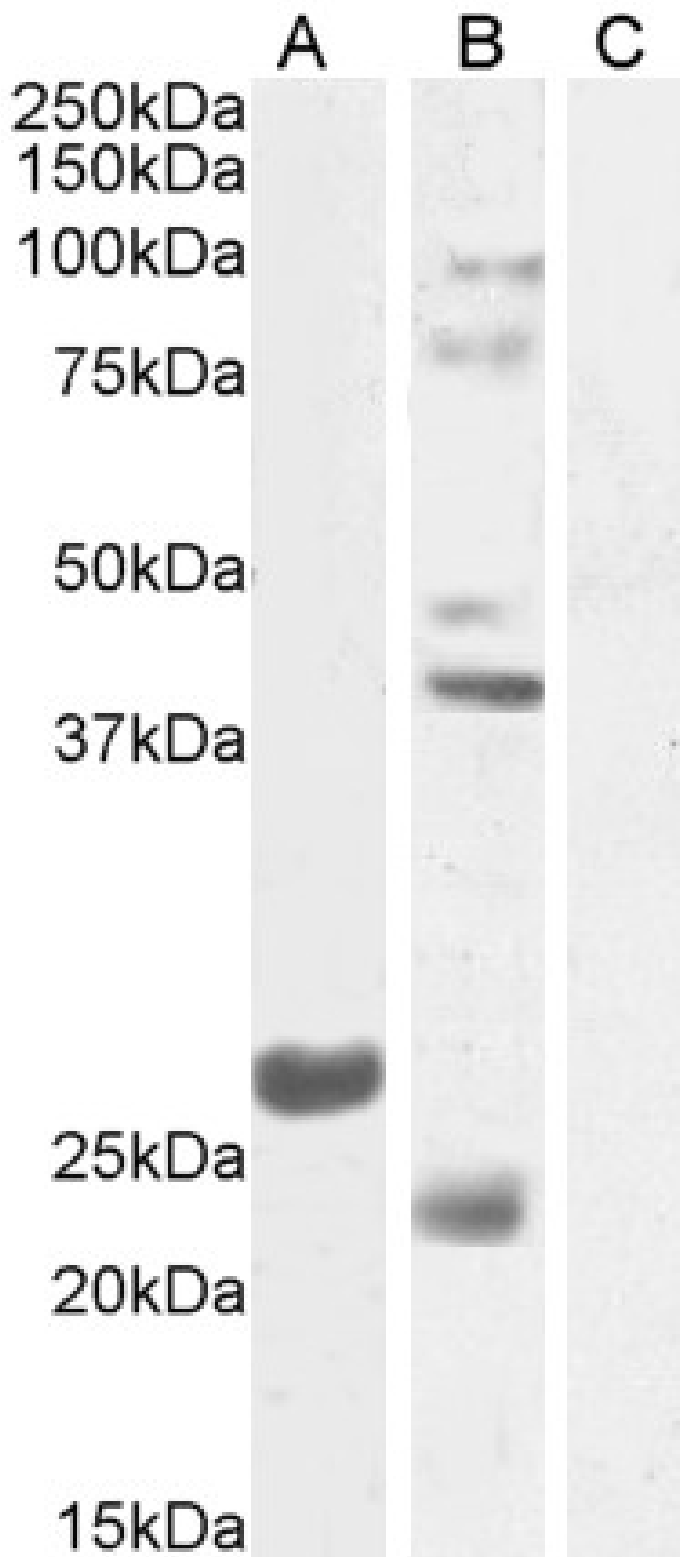


GOAT ANTI-FGF23 (MOUSE) ANTIBODY

SKU: EB11045



SPECIFICATIONS

Formulation	Supplied at 0.5 mg/ml in Tris saline, 0.02% sodium azide, pH7.3 with 0.5% bovine serum albumin.
Unit Size	100 µg
Storage	Aliquot and store at -20°C. Minimize freezing and thawing.
Instructions	
Synonym / Alias	Fgf23 tumor-derived hypophosphatemia-inducing factor tumor-derived hypophosphatemia inducing factor PHPTC phosphatonin HYPF HPDR2 fibroblast growth factor 23 FGF-23 ADHR
Names	
Accession ID	NP_073148.1
Blocking Peptide	EBP11045
Immunogen	Peptide with sequence C-ENGVDVYLSQKHH, from the internal region of the protein sequence according to NP_073148.1.
Peptide Sequence	C-ENGVDVYLSQKHH
Purification Method	Purified from goat serum by ammonium sulphate precipitation followed by antigen affinity chromatography using the immunizing peptide.
Shipping Instructions	Refrigerated
Predicted Species	Mouse, Rat
Reactive Species	Mouse
Mouse Gene ID	64654
Rat Gene ID	170583
Product Grade	https://prod-vector-labs-pimcore-assets.s3.us-east-1.amazonaws.com/assets/products/image/elite_medium.png
ELISA Detection Limit	Antibody detection limit dilution 1:128000.
Western Blot	Approx 27kDa band observed in Mouse Testis lysates (calculated MW of 27.7kDa according to NP_073148.1). Some lysates showed prominent bands at approx. 24+38kDa which were successfully blocked by incubation with the immunizing peptide and have been reported in the literature (Garringer et al., 2008, PMID:18682534). Recommended concentration: 0.3-1µg/ml. Primary incubation 1 hour at room temperature.
Application Type	Pep-ELISA, WB

DOCUMENTS

- [Data Sheet](#)

GALLERY IMAGES

