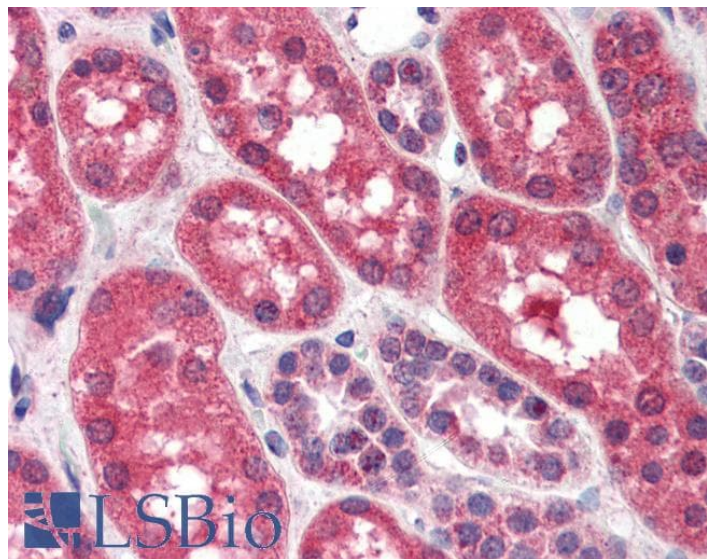


GOAT ANTI-FGFR1 ANTIBODY

SKU: EB06649



SPECIFICATIONS

Formulation Supplied at 0.5 mg/ml in Tris saline, 0.02% sodium azide, pH7.3 with 0.5% bovine serum albumin.

Unit Size 100 µg

Storage Instructions Aliquot and store at -20°C. Minimize freezing and thawing.

Synonym / Alias Names soluble FGFR1 variant 2|soluble FGFR1|OTTHUMP00000190881|OGD|HBGFR|FLJ99988|FGFBR|CD331|fibroblast growth factor receptor 1|basic fibroblast growth factor receptor 1|heparin-binding growth factor receptor|fms-related tyrosine kinase-2|hydroxyaryl-protein kinase|FMS-like tyrosine kinase 2|protein-tyrosine kinase|tyrosylprotein kinase|N-sam tyrosine kinase|FLG protein|fibroblast growth factor receptor 1 (fms-related tyrosine kinase 2, Pfeiffer syndrome)|N-SAM|C-FGR|BFGFR|KAL2|FLT2|FLG|CEK|H5|H4|H3|H2|FGFR1

Accession ID NP_075598.2; NP_056934.2; NP_075593.1; NP_075594.1; NP_075599.1

Blocking Peptide EBP06649

Immunogen Peptide with sequence CLPRHPAQLANGGLKR, from the C Terminus of the protein sequence according to NP_075598.2; NP_056934.2; NP_075593.1; NP_075594.1; NP_075599.1.

Product Comments This antibody is expected to recognise five isoforms (as represented by NP_075598.2; NP_056934.2; NP_075593.1; NP_075594.1; NP_075599.1).

Peptide Sequence CLPRHPAQLANGGLKR

Purification Method	Purified from goat serum by ammonium sulphate precipitation followed by antigen affinity chromatography using the immunizing peptide.
Shipping Instructions	Refrigerated
Predicted Species	Human, Dog, Cow
Reactive Species	Human
Human Gene ID	2260
Product Grade	https://prod-vector-labs-pimcore-assets.s3.us-east-1.amazonaws.com/assets/products/image/elite_medium.png
IHC Results	In paraffin embedded Human Small Intestine shows staining of the enterocytic cytoplasm. Recommended concentration: 4-6µg/ml. Paraffin embedded Human Kidney. Recommended concentration: 4µg/ml.
ELISA Detection Limit	Antibody detection limit dilution 1:32000.
Western Blot	Approx 75kDa band observed in Human Breast lysates (calculated MW of 82.2kDa according to NP_075593, 81.9kDa according to NP_075594). Recommended concentration: 0.3-1µg/ml.
Application Type	Pep-ELISA, WB, IHC

DOCUMENTS

- [Data Sheet](#)

GALLERY IMAGES

