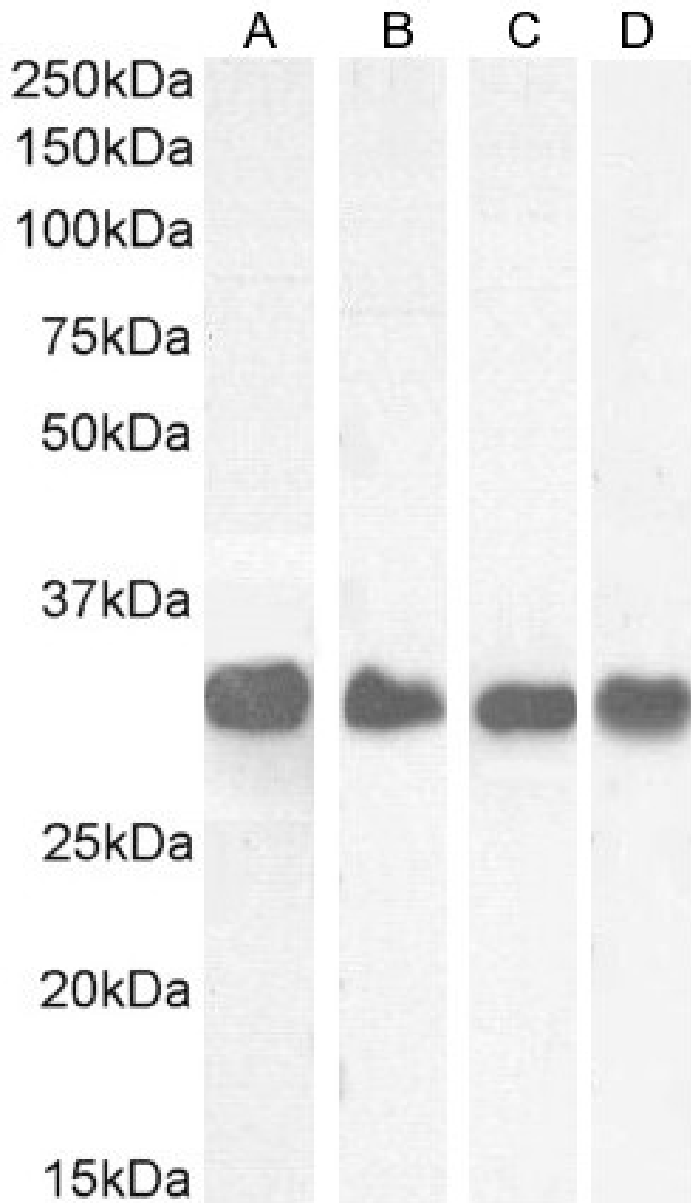


GOAT ANTI-FHL1/ SLIM1 (MOUSE) ANTIBODY

SKU: EB06507



SPECIFICATIONS

Formulation	Supplied at 0.5 mg/ml in Tris saline, 0.02% sodium azide, pH7.3 with 0.5% bovine serum albumin.
Unit Size	100 µg
Storage Instructions	Aliquot and store at -20°C. Minimize freezing and thawing.
Synonym / Alias Names	SLIM LIM protein SLIMMER SLIM-1 FLH1A FHL-1 Isl-1 and Mec-3 domains 1 four-and-a-half Lin1 XMPMA SLIMMER MGC111107 KYOT FHL1B skeletal muscle LIM-protein1 Four-and-a-half LIM domains 1 four and a half LIM domains 1 FHL1A RP11-535K18.1 KYO-T SLIM1 FHL1
Usage Summary	Immunofluorescence: Strong expression of the protein seen in the cytoplasm of U2OS cells. Recommended concentration: 10µg/ml. Flow Cytometry: Flow cytometric analysis of U2OS cells. Recommended concentration: 10ug/ml.
Accession ID	NP_001070830.1; NP_001274729.1
Blocking Peptide	EBP06507
Immunogen	Peptide with sequence CNKRFVFNHEQVY, from the internal region of the protein sequence according to NP_001070830.1; NP_001274729.1.
Product Comments	This antibody is expected to recognize Mouse NP_001070830.1 iso 2 , NP_001274729.1 iso 3 and Rat NP_001029098.1 iso 1, NP_001258128.1 iso 3.
Peptide Sequence	CNKRFVFNHEQVY
Purification Method	Purified from goat serum by ammonium sulphate precipitation followed by antigen affinity chromatography using the immunizing peptide.
Shipping Instructions	Refrigerated
Predicted Species	Human, Mouse, Rat, Cow
Reactive Species	Human, Mouse, Rat
Mouse Gene ID	14199
Rat Gene ID	25177
Product Grade	https://prod-vector-labs-pimcore-assets.s3.us-east-1.amazonaws.com/assets/products/image/elite_plus_medium.png
ELISA Detection Limit	Antibody detection limit dilution 1:32000.
Western Blot	Approx 32kDa band observed in Human, Mouse and Rat Skeletal Muscle lysates and in Rat Lung and Testis lysates (calculated MW of 31.9kDa according to Mouse NP_001274729.1 and Rat NP_001258128.1). Recommended concentration: 0.01-0.5µg/ml. Primary incubation 1 hour at room temperature.
Application Type	Pep-ELISA, WB, IF, FC

GALLERY IMAGES

