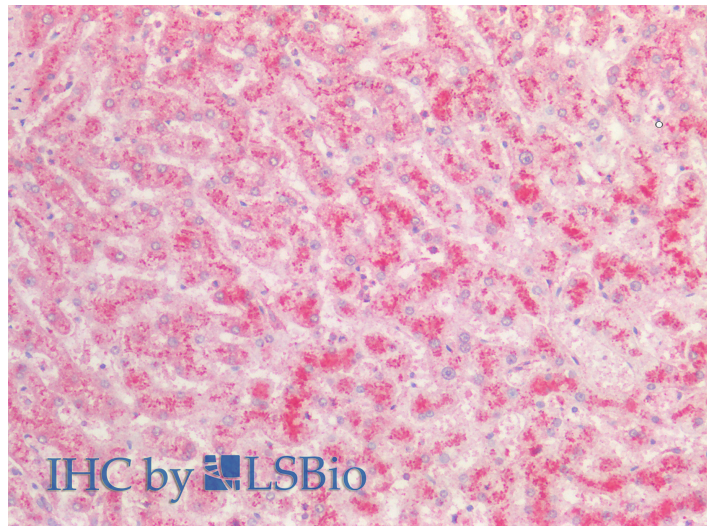


GOAT ANTI-FIBRINOGEN ALPHA CHAIN (AA123-135) ANTIBODY

SKU: EB12377



SPECIFICATIONS

Formulation Supplied at 0.5 mg/ml in Tris saline, 0.02% sodium azide, pH7.3 with 0.5% bovine serum albumin.

Unit Size 100 µg

Storage Instructions Aliquot and store at -20°C. Minimize freezing and thawing.

Synonym /

Alias Names fibrinogen, A alpha polypeptide|Fib2|fibrinogen alpha chain|FGA

Accession ID NP_000499.1; NP_068657.1

Blocking Peptide EBP12377

Immunogen Peptide with sequence C-RDNTYNRVSEDLR, from the internal region of the protein sequence according to NP_000499.1; NP_068657.1.

Product Comments This antibody is expected to recognize both reported isoforms (NP_000499.1; NP_068657.1).

Peptide Sequence C-RDNTYNRVSEDLR

Purification Method	Purified from goat serum by ammonium sulphate precipitation followed by antigen affinity chromatography using the immunizing peptide.
Shipping Instructions	Refrigerated
Predicted Species	Human
Reactive Species	Human
Human Gene ID	2243
Product Grade	https://prod-vector-labs-pimcore-assets.s3.us-east-1.amazonaws.com/assets/products/image/elite_medium.png
IHC Results	Paraffin embedded Human Liver. Recommended concentration: 5µg/ml.
ELISA Detection Limit	Antibody detection limit dilution 1:64000.
Western Blot	Approx 75kDa band observed in Human Platelets lysates (calculated MW of 69.8kDa according to NP_068657.1). Recommended concentration: 0.01-0.03µg/ml.
Application Type	Pep-ELISA, WB, IHC

DOCUMENTS

- [Data Sheet](#)

GALLERY IMAGES

