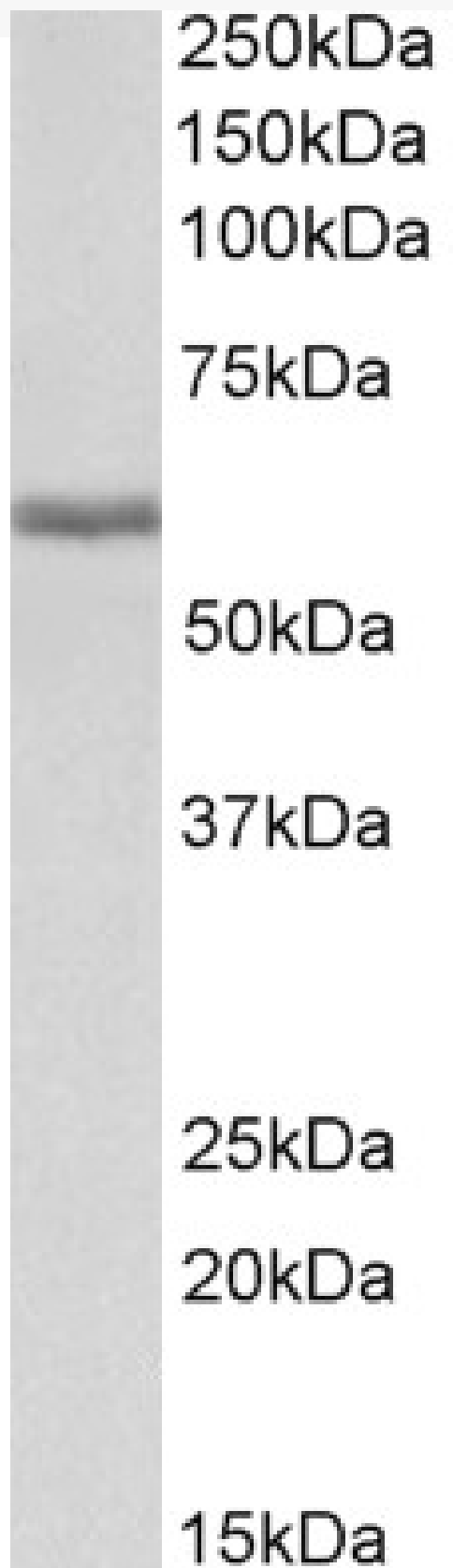


GOAT ANTI-FIBRINOGEN BETA CHAIN (AA177-190) ANTIBODY

SKU: EB12378



SPECIFICATIONS

Formulation	Supplied at 0.5 mg/ml in Tris saline, 0.02% sodium azide, pH7.3 with 0.5% bovine serum albumin.
Unit Size	100 µg
Storage Instructions	Aliquot and store at -20°C. Minimize freezing and thawing.
Synonym / Alias Names	fibrinogen, B beta polypeptide fibrinogen beta chain FGB
Accession ID	NP_005132.2; NP_001171670.1
Blocking Peptide	EBP12378
Immunogen	Peptide with sequence C-EKHQLYIDETVNSN, from the internal region of the protein sequence according to NP_005132.2; NP_001171670.1.
Product Comments	This antibody is expected to recognize both reported isoforms (NP_005132.2; NP_001171670.1).
Peptide Sequence	C-EKHQLYIDETVNSN
Purification Method	Purified from goat serum by ammonium sulphate precipitation followed by antigen affinity chromatography using the immunizing peptide.
Shipping Instructions	Refrigerated
Predicted Species	Human, Pig
Reactive Species	Human
Human Gene ID	2244
Product Grade	https://prod-vector-labs-pimcore-assets.s3.us-east-1.amazonaws.com/assets/products/image/elite_medium.png
IHC Results	Paraffin embedded Human Placenta and Kidney. Recommended concentration: 5µg/ml.
ELISA Detection Limit	Antibody detection limit dilution 1:128000.
Western Blot	Approx 60kDa band observed in Human Liver lysates (calculated MW of 55.9kDa according to NP_005132.2). Recommended concentration: 0.01-0.03µg/ml. Primary incubation 1 hour at room temperature. Preliminary testing was unsuccessful on Pig Liver for this particular batch.
Application Type	Pep-ELISA, WB, IHC

DOCUMENTS

- [Data Sheet](#)

GALLERY IMAGES

250kDa

150kDa

100kDa

75kDa

50kDa

37kDa

25kDa

20kDa

15kDa

