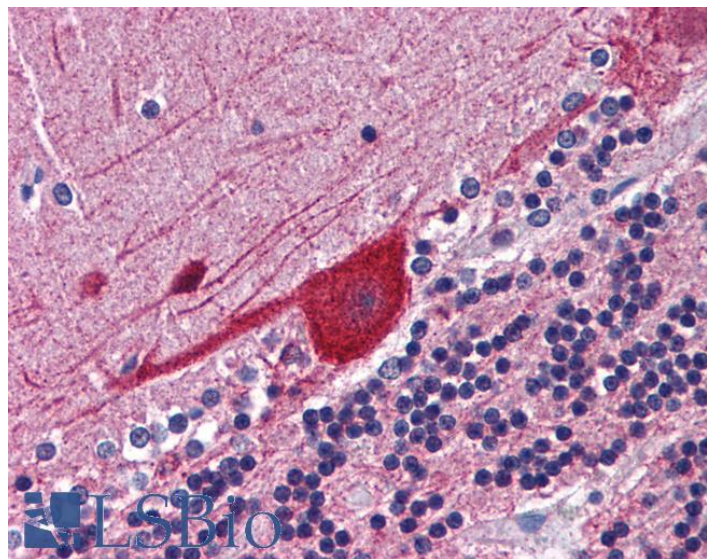


GOAT ANTI-FKBP4 / FKBP52 ANTIBODY

SKU: EB09090



SPECIFICATIONS

Formulation Supplied at 0.5 mg/ml in Tris saline, 0.02% sodium azide, pH7.3 with 0.5% bovine serum albumin.

Unit Size 100 µg

Storage Instructions Aliquot and store at -20°C. Minimize freezing and thawing.

Synonym / Alias Names rotamase|peptidylprolyl cis-trans isomerase|p59 protein|T-cell FK506-binding protein, 59kD|HSP binding immunophilin|FK506-binding protein 4 (59kD)|FK506-binding protein 4|FK506 binding protein 4 (59kD)|p52|PPIase|Hsp56|HBI|FKBP59|FK506 binding protein 4, 59kDa|FKBP52|FKBP4

Accession ID NP_002005.1

Blocking Peptide EBP09090

Immunogen Peptide with sequence C-DHPTDTEMKEEQKSN, from the C Terminus of the protein sequence according to NP_002005.1.

Peptide Sequence C-DHPTDTEMKEEQKSN

Purification Method Purified from goat serum by ammonium sulphate precipitation followed by antigen affinity chromatography using the immunizing peptide.

Shipping Instructions Refrigerated

Predicted Species	Human
Reactive Species	Human
Human Gene ID	2288
Product Grade	https://prod-vector-labs-pimcore-assets.s3.us-east-1.amazonaws.com/assets/products/image/elite_medium.png
IHC Results	Paraffin embedded Human Kidney and Brain (Cerebellum). Recommended concentration: 3.75µg/ml.
ELISA	
Detection Limit	Antibody detection limit dilution 1:8000.
Western Blot	Approx 52kDa band observed in Human Placenta lysates (calculated MW of 51.8kDa according to NP_002005.1). Recommended concentration: 0.01-0.03µg/ml. Primary incubation was 1 hour.
Application Type	Pep-ELISA, WB, IHC

DOCUMENTS

- [Data Sheet](#)

GALLERY IMAGES

