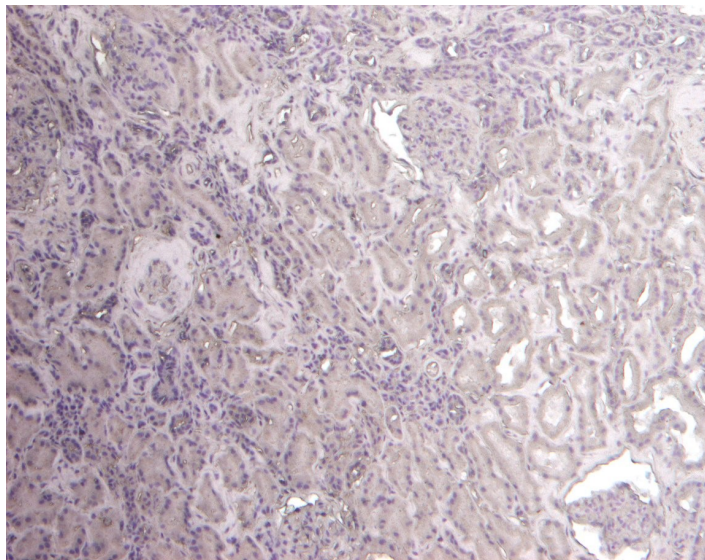


# GOAT ANTI-FLOTILLIN 1 ANTIBODY

**SKU:** EB05449



## SPECIFICATIONS

**Formulation** Supplied at 0.5 mg/ml in Tris saline, 0.02% sodium azide, pH7.3 with 0.5% bovine serum albumin.

**Unit Size** 100 µg

**Storage Instructions** Aliquot and store at -20°C. Minimize freezing and thawing.

**Synonym /**

**Alias Names** DADB-118P11.2|integral membrane component of caveolae|reggie-2|flotillin 1|FLOT1

**Accession ID** NP\_005794.1; NP\_001305804.1

**Blocking Peptide** EBP05449

**Immunogen** Peptide with sequence C-SISQVNHKPLRTA, from the C Terminus of the protein sequence according to NP\_005794.1; NP\_001305804.1.

**Product Comments** This antibody is expected to recognize both reported isoforms (NP\_005794.1; NP\_001305804.1).

**Peptide Sequence** C-SISQVNHKPLRTA

**Purification Method** Purified from goat serum by ammonium sulphate precipitation followed by antigen affinity chromatography using the immunizing peptide.

<b>Shipping Instructions</b>	Refrigerated
<b>Predicted Species</b>	Human, Dog, Pig, Cow
<b>Reactive Species</b>	Human
<b>Human Gene ID</b>	10211
<b>Mouse Gene ID</b>	14251
<b>Product Grade</b>	<a href="https://prod-vector-labs-pimcore-assets.s3.us-east-1.amazonaws.com/assets/products/image/elite_medium.png">https://prod-vector-labs-pimcore-assets.s3.us-east-1.amazonaws.com/assets/products/image/elite_medium.png</a>
<b>IHC Results</b>	Paraffin embedded Human Kidney. Recommended concentration: 5µg/ml.
<b>ELISA</b>	
<b>Detection Limit</b>	Antibody detection limit dilution 1:32000.
<b>Western Blot</b>	Approx 48kDa band observed in lysates of cell line K562 and in preliminary testing of cell lysate MCF7 (calculated MW of 47.4kDa according to NP_005794.1). Recommended concentration: 0.1-0.3µg/ml. Primary incubation 1 hour at room temperature.
<b>Application Type</b>	Pep-ELISA, WB, IHC

## DOCUMENTS

- [Data Sheet](#)

## GALLERY IMAGES

