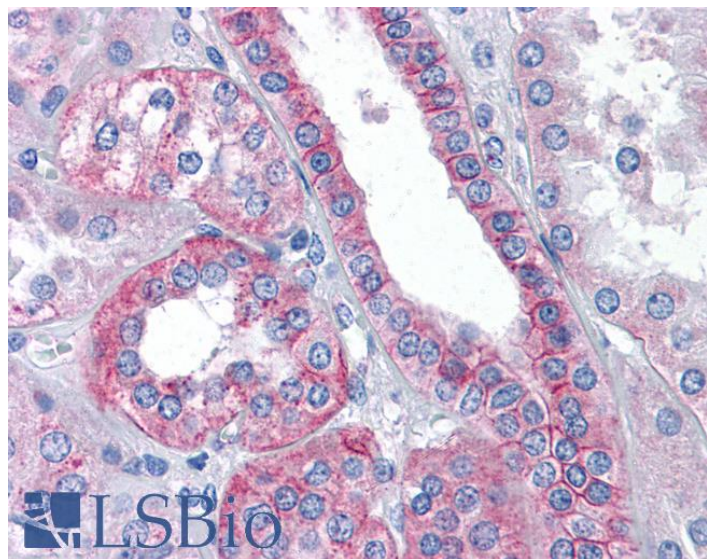


# GOAT ANTI-FLOTILLIN 2 / FLOT2 (C TERM) ANTIBODY

**SKU:** EB05448



## SPECIFICATIONS

**Formulation** Supplied at 0.5 mg/ml in Tris saline, 0.02% sodium azide, pH7.3 with 0.5% bovine serum albumin.

**Unit Size** 100 µg

**Storage Instructions** Aliquot and store at -20°C. Minimize freezing and thawing.

**Synonym / Alias Names** surface marker 1 (35kD protein identified by monoclonal antibody ECS-1)|chromosome 17|membrane component|ECS1|ECS-1|Flotillin 2 (epidermal surface antigen 1)|M17S1|ESA1|ESA|reggie-1|flotillin 2|FLOT2

**Accession ID** NP\_004466.2

**Blocking Peptide** EBP05448

**Immunogen** Peptide with sequence C-SKIPLIKKATGVQV, from the C Terminus of the protein sequence according to NP\_004466.2.

**Peptide Sequence** C-SKIPLIKKATGVQV

**Purification Method** Purified from goat serum by ammonium sulphate precipitation followed by antigen affinity chromatography using the immunizing peptide.

**Shipping Instructions** Refrigerated

<b>Predicted Species</b>	Human
<b>Reactive Species</b>	Human
<b>Human Gene ID</b>	2319
<b>Product Grade</b>	<a href="https://prod-vector-labs-pimcore-assets.s3.us-east-1.amazonaws.com/assets/products/image/elite_medium.png">https://prod-vector-labs-pimcore-assets.s3.us-east-1.amazonaws.com/assets/products/image/elite_medium.png</a>
<b>IHC Results</b>	Paraffin embedded Human Tonsil and Kidney. Recommended concentration: 3.75µg/ml.
<b>ELISA</b>	
<b>Detection Limit</b>	Antibody detection limit dilution 1:32000.
<b>Western Blot</b>	Approx 48kDa band observed in Human Brain (Cerebellum), Lung and Testis lysates (calculated MW of 47.1kDa according to NP_004466.2). Recommended concentration: 0.1-0.3µg/ml.
<b>Application Type</b>	Pep-ELISA, WB, IHC

## DOCUMENTS

- [Data Sheet](#)

## GALLERY IMAGES

