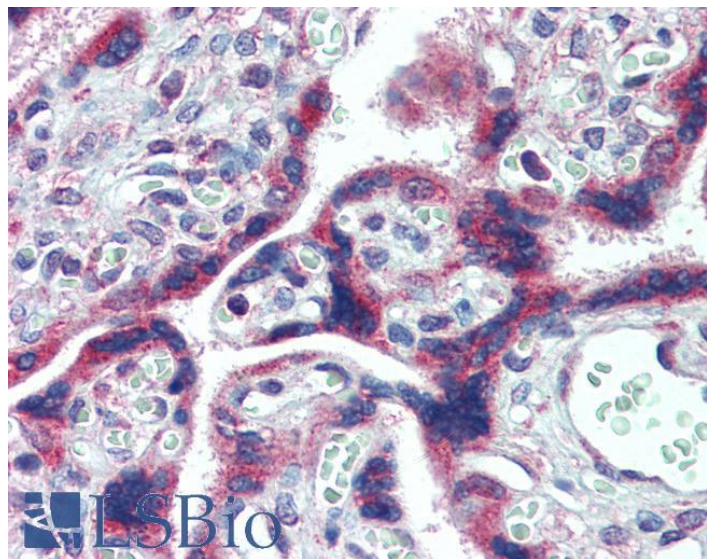


GOAT ANTI-FMR1 ANTIBODY

SKU: EB07868



SPECIFICATIONS

Formulation Supplied at 0.5 mg/ml in Tris saline, 0.02% sodium azide, pH7.3 with 0.5% bovine serum albumin.

Unit Size 100 µg

Storage Instructions Aliquot and store at -20°C. Minimize freezing and thawing.

Synonym /

Alias Names MGC87458|FRAXA|FMRP|fragile X mental retardation 1|FMR1

Accession ID NP_002015.1

Blocking Peptide EBP07868

Immunogen Peptide with sequence C-RTGKDRNQKKEKPD, from the internal region (near the C Terminus) of the protein sequence according to NP_002015.1.

Peptide Sequence C-RTGKDRNQKKEKPD

Purification Method Purified from goat serum by ammonium sulphate precipitation followed by antigen affinity chromatography using the immunizing peptide.

Shipping Instructions Refrigerated

Predicted Species	Human, Mouse, Rat, Dog
Reactive Species	Human
Human Gene ID	2332
Product Grade	https://prod-vector-labs-pimcore-assets.s3.us-east-1.amazonaws.com/assets/products/image/elite_medium.png
IHC Results	Paraffin embedded Human Placenta. Recommended concentration: 2.5µg/ml.
ELISA	
Detection Limit	Antibody detection limit dilution 1:128000.
Western Blot	Approx 80kDa band observed in lysates of cell line KELLY (calculated MW of 71.2kDa according to NP_002015.1). The observed molecular weight corresponds to earlier findings in literature with different antibodies (Sittler et al, Hum Mol Genet. 1996 Jan;5(1):95-102; PMID: 8789445). Recommended concentration: 0.1-0.3µg/ml. Primary incubation was 1 hour.
Application Type	Pep-ELISA, WB, IHC

DOCUMENTS

- [Data Sheet](#)

GALLERY IMAGES

