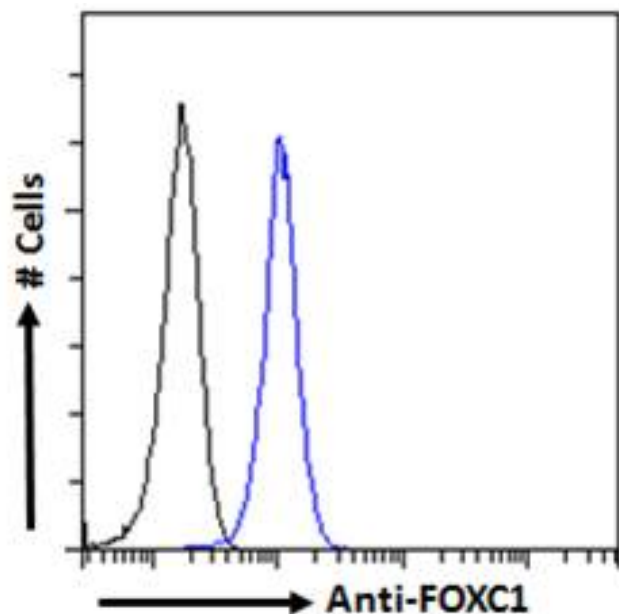


GOAT ANTI-FOXC1 (C TERM) ANTIBODY

SKU: EB06006



SPECIFICATIONS

Formulation Supplied at 0.5 mg/ml in Tris saline, 0.02% sodium azide, pH7.3 with 0.5% bovine serum albumin.

Unit Size 100 µg

Storage Instructions Aliquot and store at -20°C. Minimize freezing and thawing.

Synonym / Alias Names myeloid factor-delta|forkhead/winged helix-like transcription factor 7|RIEG3|FREAC-3|Forkhead, drosophila, homolog-like 7|forkhead-related activator 3|forkhead (Drosophila)-like 7|iridogoniodysgenesis type 1|FREAC3|IRID1|FKHL7|IHG1|IGDA|ARA|forkhead box C1|FOXC1

Usage Summary **Immunofluorescence:** Strong expression of the protein seen in the cytoplasm and nucleus of U2OS cells. Recommended concentration: 10µg/ml. **Flow Cytometry:** Flow cytometric analysis of HEK293 cells. Recommended concentration: 10ug/ml.

Accession ID NP_001444.2

Blocking Peptide EBP06006

Immunogen Peptide with sequence RTSGAFVYDCSKF, from the C Terminus of the protein sequence according to NP_001444.2.

Peptide Sequence	RTSGAFVYDCSKF
Purification Method	Purified from goat serum by ammonium sulphate precipitation followed by antigen affinity chromatography using the immunizing peptide.
Shipping Instructions	Refrigerated
Predicted Species	Human, Mouse, Rat
Reactive Species	Human
Human Gene ID	2296
Mouse Gene ID	17300
Product Grade	https://prod-vector-labs-pimcore-assets.s3.us-east-1.amazonaws.com/assets/products/image/elite_medium.png
ELISA Detection Limit	Antibody detection limit dilution 1:32000.
Application Type	Pep-ELISA, IF, FC

DOCUMENTS

- [Data Sheet](#)

GALLERY IMAGES

