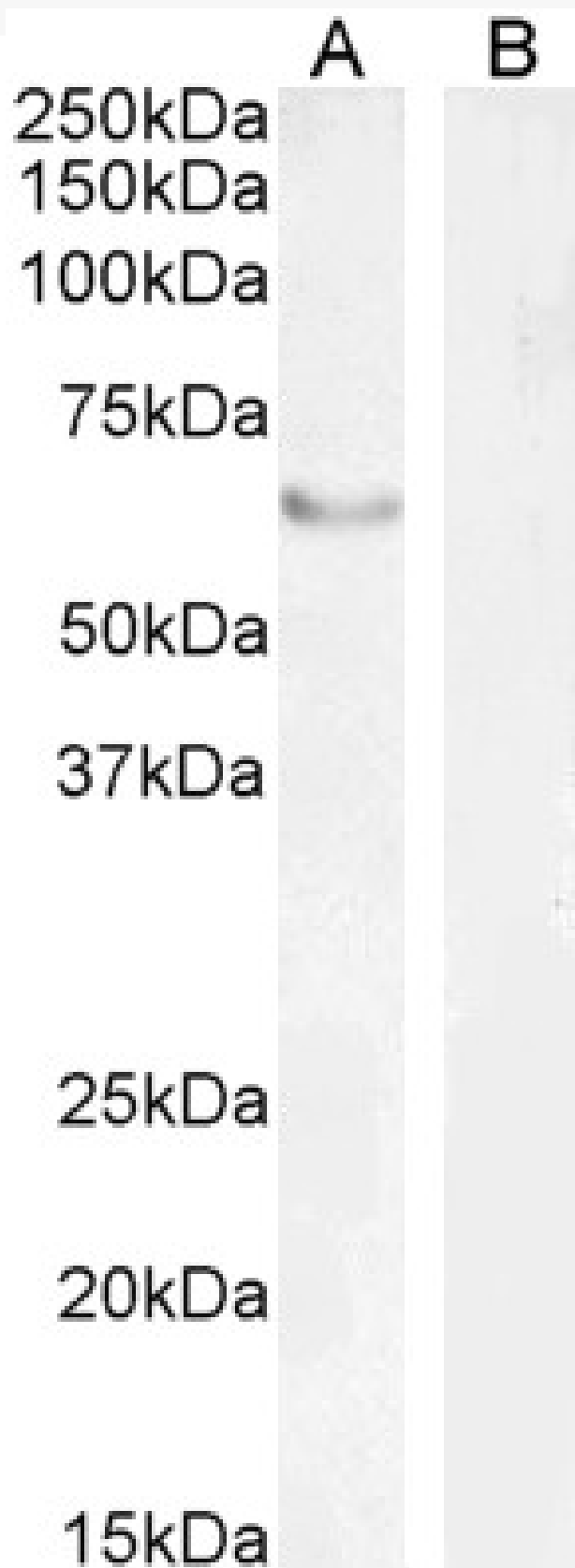


# GOAT ANTI-FOXC2 ANTIBODY

**SKU:** EB06007



## SPECIFICATIONS

**Formulation** Supplied at 0.5 mg/ml in Tris saline, 0.02% sodium azide, pH7.3 with 0.5% bovine serum albumin.

**Unit Size** 100 µg

**Storage Instructions** Aliquot and store at -20°C. Minimize freezing and thawing.

**Synonym / Alias Names** forkhead, Drosophila, homolog-like 14|forkhead box C2|LD|forkhead (Drosophila)-like 14 (MFH-1, mesenchyme forkhead 1)|forkhead, Drosophila, homolog-like 14|forkhead (Drosophila)-like 14|MFH-1, mesenchyme forkhead 1|FKHL14|MFH-1|MFH1|forkhead box C2 (MFH-1, mesenchyme forkhead 1)|FOXC2

**Usage Summary** <strong>Flow Cytometry:</strong> Flow cytometric analysis of HEK293 cells. Recommended concentration: 10ug/ml.

**Accession ID** NP\_005242.1

**Blocking Peptide** EBP06007

**Immunogen** Peptide with sequence RHAAPYSYDCTKY, from the C Terminus of the protein sequence according to NP\_005242.1.

**Peptide Sequence** RHAAPYSYDCTKY

**Purification Method** Purified from goat serum by ammonium sulphate precipitation followed by antigen affinity chromatography using the immunizing peptide.

**Shipping Instructions** Refrigerated

**Predicted Species** Human, Rat, Dog, Cow

**Reactive Species** Human

**Human Gene ID** 2303

**Mouse Gene ID** 14234

**Product Grade** [https://prod-vector-labs-pimcore-assets.s3.us-east-1.amazonaws.com/assets/products/image/elite\\_medium.png](https://prod-vector-labs-pimcore-assets.s3.us-east-1.amazonaws.com/assets/products/image/elite_medium.png)

**ELISA Detection Limit** Antibody detection limit dilution 1:4000.

**Western Blot** Approx 60-70kDa band observed in nuclear lysates of cell lines HEK293 (calculated MW of 53.7kDa according to NP\_005242.1). This molecular weight is routinely observed by other sources e.g. Berry, FB et al; PMID: 16081467. Recommended concentration: 2µg/ml. Primary incubation 1 hour at room temperature.<strong>Negative Control:</strong> Human Pancreas lysate. Recommended concentration, 0.3-1µg/ml. Preliminary testing was unsuccessful on NIH3T3 for this particular batch.

**Application Type** Pep-ELISA, WB, FC

## DOCUMENTS

- [Data Sheet](#)

## GALLERY IMAGES

