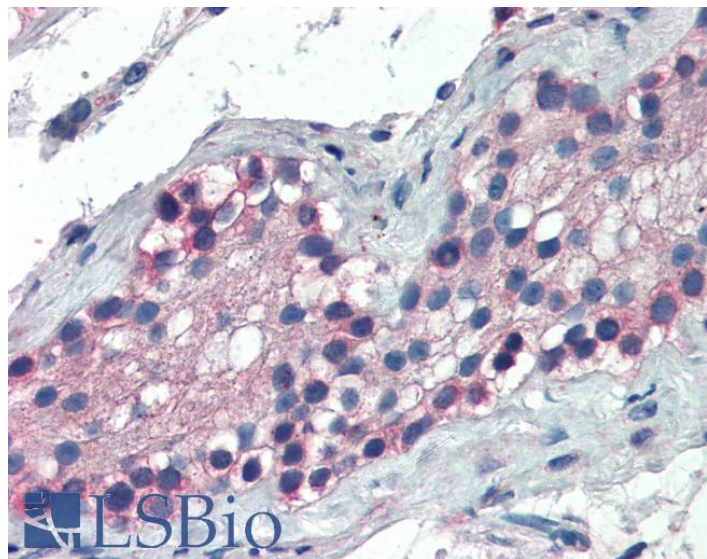


GOAT ANTI-FOXE1 / TTF2 ANTIBODY

SKU: EB06011



SPECIFICATIONS

Formulation	Supplied at 0.5 mg/ml in Tris saline, 0.02% sodium azide, pH7.3 with 0.5% bovine serum albumin.
Unit Size	100 µg
Storage Instructions	Aliquot and store at -20°C. Minimize freezing and thawing.
Synonym / Alias Names	Forkhead, drosophila, homolog-like 15 thyroid transcription factor-2 forkhead box E2 forkhead box E1 forkhead (Drosophila)-like 15 FKHL15 TTF-2 TTF2 HFKL5 HFKH4 FOXE2 forkhead box E1 (thyroid transcription factor 2) TTF2 FOXE1
Accession ID	NP_004464.2
Blocking Peptide	EBP06011
Immunogen	Peptide with sequence C-AYPGGIDRFVSAM, from the C Terminus of the protein sequence according to NP_004464.2.
Peptide Sequence	C-AYPGGIDRFVSAM
Purification Method	Purified from goat serum by ammonium sulphate precipitation followed by antigen affinity chromatography using the immunizing peptide.
Shipping Instructions	Refrigerated

Predicted Species	Human
Reactive Species	Human
Human Gene ID	2304
Product Grade	https://prod-vector-labs-pimcore-assets.s3.us-east-1.amazonaws.com/assets/products/image/elite_medium.png
IHC Results	In paraffin embedded Human Thyroid Gland shows nuclear staining in thyrocytes. Recommended concentration: 2-4µg/ml. Paraffin embedded Human Testis. Recommended concentration: 5µg/ml.
ELISA	
Detection Limit	Antibody detection limit dilution 1:8000.
Western Blot	Preliminary experiments gave an approx 70kDa band in Human Thymus and Thyroid Gland lysates after 0.3µg/ml antibody staining. Please note that currently we cannot find an explanation in the literature for the band we observe given the calculated size of 38.1kDa according to NP_004464.2. The 70kDa band was successfully blocked by incubation with the immunizing peptide.
Application Type	Pep-ELISA, IHC

DOCUMENTS

- [Data Sheet](#)

GALLERY IMAGES

