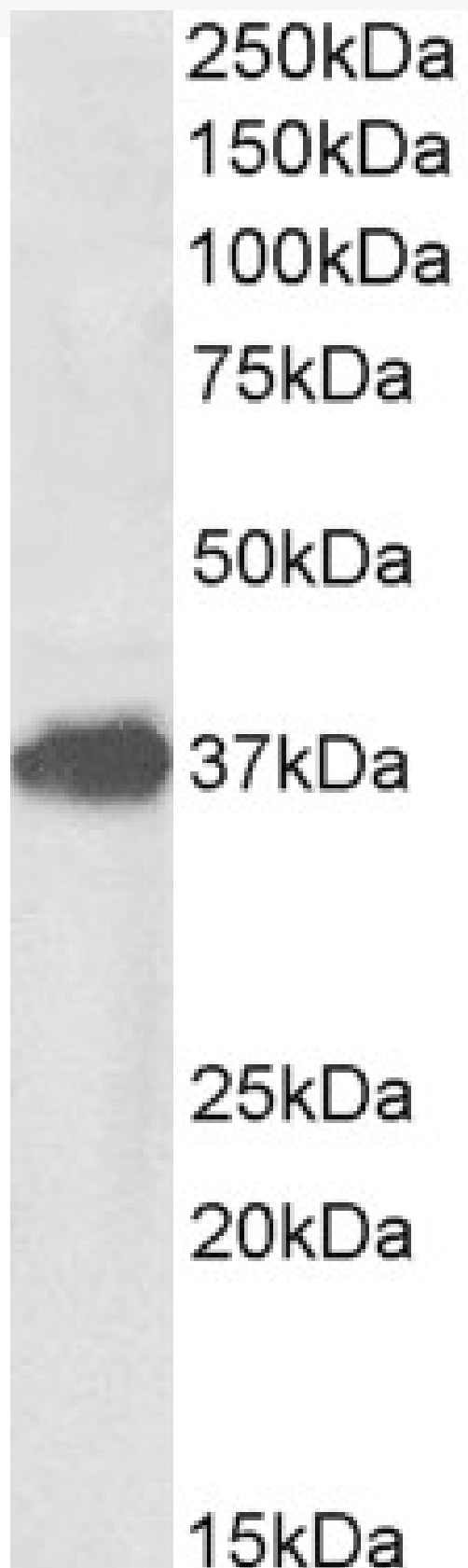


GOAT ANTI-FOXF1 ANTIBODY

SKU: EB12197



SPECIFICATIONS

Formulation	Supplied at 0.5 mg/ml in Tris saline, 0.02% sodium azide, pH7.3 with 0.5% bovine serum albumin.
Unit Size	100 µg
Storage Instructions	Aliquot and store at -20°C. Minimize freezing and thawing.
Synonym / Alias Names	FOXF1 forkhead box F1 ACDMPV FKHL5 FREAC1 FREAC-1 Forkhead, drosophila, homolog-like 5 forkhead box protein F1 forkhead-related activator 1 forkhead-related protein FKHL5 forkhead-related transcription factor 1
Accession ID	NP_001442.2
Blocking Peptide	EBP12197
Immunogen	Peptide with sequence HQQVTYQDIKPC, from the C Terminus of the protein sequence according to NP_001442.2.
Peptide Sequence	HQQVTYQDIKPC
Purification Method	Purified from goat serum by ammonium sulphate precipitation followed by antigen affinity chromatography using the immunizing peptide.
Shipping Instructions	Refrigerated
Predicted Species	Human, Mouse, Dog, Cow
Reactive Species	Mouse
Human Gene ID	2294
Mouse Gene ID	15227
Product Grade	https://prod-vector-labs-pimcore-assets.s3.us-east-1.amazonaws.com/assets/products/image/elite_medium.png
ELISA Detection Limit	Antibody detection limit dilution 1:128000.
Western Blot	Approx 37kDa band observed in Mouse Lung lysates (calculated MW of 40.0kDa according to Mouse NP_034556.2). Recommended concentration: 1-3µg/ml.
Application Type	Pep-ELISA, WB

DOCUMENTS

- [Data Sheet](#)

GALLERY IMAGES

