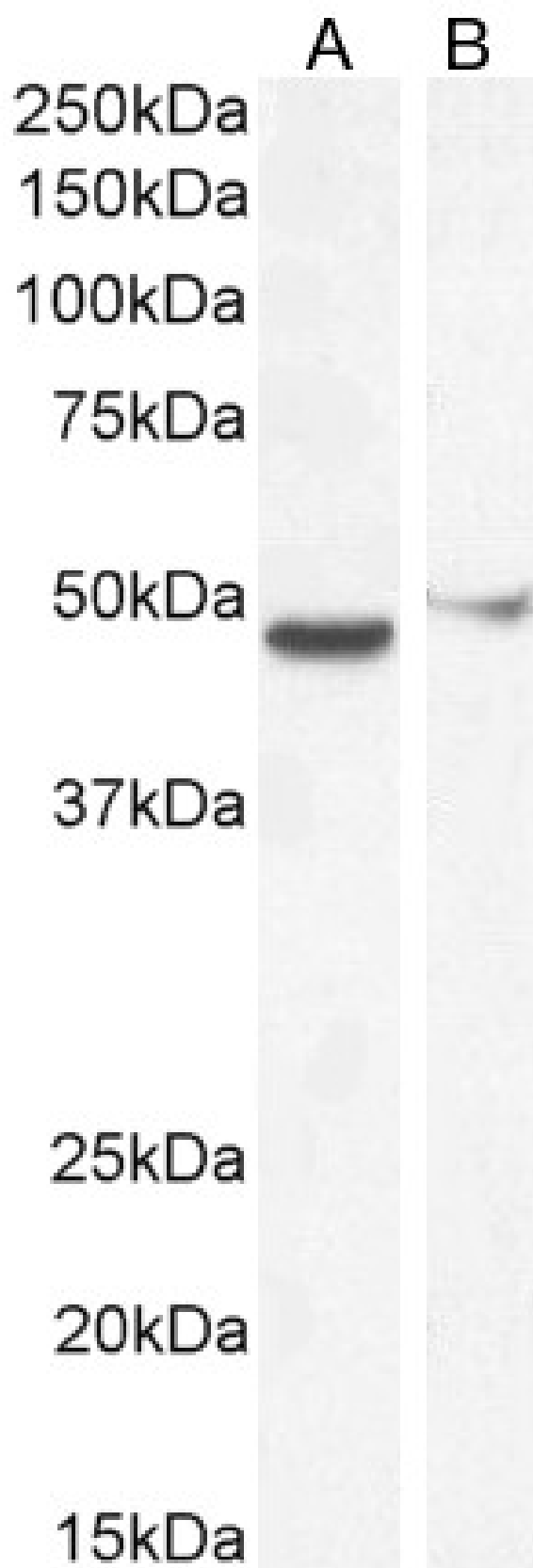


# GOAT ANTI-FOXG1 / BF2 ANTIBODY

**SKU:** EB05608



## SPECIFICATIONS

<b>Formulation</b>	Supplied at 0.5 mg/ml in Tris saline, 0.02% sodium azide, pH7.3 with 0.5% bovine serum albumin.
<b>Unit Size</b>	100 µg
<b>Storage Instructions</b>	Aliquot and store at -20°C. Minimize freezing and thawing.
<b>Synonym / Alias</b>	oncogene QIN forkhead-like 4 forkhead-like 3 forkhead-like 2 forkhead-like 1 forkhead, drosophila, homolog-like 2 forkhead box G1C forkhead box G1B forkhead box G1A brain factor 2 OTTHUMP00000178764 QIN KHL2 HFK3 HFK2 HFK1 HBF2 HBF-G2 HBF-3 HBF-2 HBF-1 FOXG1C FOXG1B FOXG1A FKHL4 FKHL3 FKHL2 FKHL1 FKH2 FHKL3 BF2 BF1 forkhead box G1
<b>Usage Summary</b>	<strong>Flow Cytometry:</strong> Flow cytometric analysis of U251 cells. Recommended concentration: 10ug/ml.
<b>Accession ID</b>	NP_005240.3
<b>Blocking Peptide</b>	EBP05608
<b>Immunogen</b>	Peptide with sequence C-HQNQGSSSNPLIH, from the C Terminus of the protein sequence according to NP_005240.3.
<b>Peptide Sequence</b>	C-HQNQGSSSNPLIH
<b>Purification Method</b>	Purified from goat serum by ammonium sulphate precipitation followed by antigen affinity chromatography using the immunizing peptide.
<b>Shipping Instructions</b>	Refrigerated
<b>Predicted Species</b>	Human, Mouse, Rat, Dog, Cow
<b>Reactive Species</b>	Human
<b>Human Gene ID</b>	2290
<b>Mouse Gene ID</b>	15228
<b>Rat Gene ID</b>	24370
<b>Product Grade</b>	<a href="https://prod-vector-labs-pimcore-assets.s3.us-east-1.amazonaws.com/assets/products/image/elite_medium.png">https://prod-vector-labs-pimcore-assets.s3.us-east-1.amazonaws.com/assets/products/image/elite_medium.png</a>
<b>ELISA Detection Limit</b>	Antibody detection limit dilution 1:64000.
<b>Western Blot</b>	Approx. 48kDa band observed in lysates of cell line U251, and approx. 48-50kDa in Human Cerebellum and Cerebral Cortex lysates (calculated MW of 52.4kDa according to NP_005240.3 (FOXG1B), and 50.5kDa according to CAA55038.1 (FOXG1A). An additional band at 70-75kDa was observed in some lysates and was successfully blocked by incubation with the immunizing peptide, Recommended concentration: 0.3-1/ml. Primary incubation 1 hour at room temperature.
<b>Application Type</b>	Pep-ELISA, WB, FC

## DOCUMENTS

- [Data Sheet](#)

## GALLERY IMAGES

