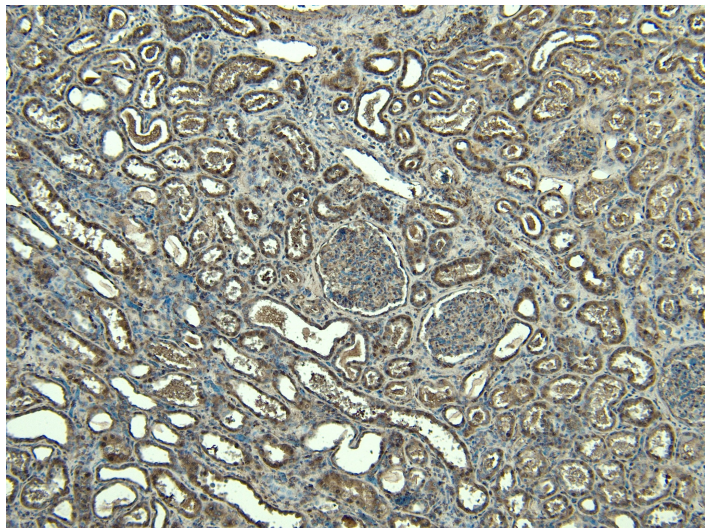


# GOAT ANTI-FOXI1 / FKHL10 ANTIBODY

**SKU:** EB06019



## SPECIFICATIONS

**Formulation** Supplied at 0.5 mg/ml in Tris saline, 0.02% sodium azide, pH7.3 with 0.5% bovine serum albumin.

**Unit Size** 100 µg

**Storage Instructions** Aliquot and store at -20°C. Minimize freezing and thawing.

**Synonym / Alias Names** forkhead-like 10|MGC34197|FKH10|hepatocyte nuclear factor 3 forkhead homolog 3|Forkhead, drosophila, homolog-like 10|forkhead (Drosophila)-like 10|forkhead-related activator 6|HNF-3/fork-head homolog-3|FREAC6|FKHL10|HFH3|forkhead box I1|FOXI1

**Accession ID** NP\_036320.2; NP\_658982.1

**Blocking Peptide** EBP06019

**Immunogen** Peptide with sequence C-TSGVLYPREGTEV, from the C Terminus of the protein sequence according to NP\_036320.2; NP\_658982.1.

**Product Comments** This antibody is expected to recognise both reported human isoforms (NP\_036320.2; NP\_658982.1).

**Peptide Sequence** C-TSGVLYPREGTEV

**Purification Method** Purified from goat serum by ammonium sulphate precipitation followed by antigen affinity chromatography using the immunizing peptide.

<b>Shipping Instructions</b>	Refrigerated
<b>Predicted Species</b>	Human
<b>Reactive Species</b>	Human
<b>Human Gene ID</b>	2299
<b>Product Grade</b>	<a href="https://prod-vector-labs-pimcore-assets.s3.us-east-1.amazonaws.com/assets/products/image/elite_medium.png">https://prod-vector-labs-pimcore-assets.s3.us-east-1.amazonaws.com/assets/products/image/elite_medium.png</a>
<b>IHC Results</b>	Paraffin embedded Human Kidney. Recommended concentration: 5-6µg/ml.
<b>ELISA</b>	
<b>Detection Limit</b>	Antibody detection limit dilution 1:8000.
<b>Western Blot</b>	Approx 30kDa band observed in Human Testis lysates and in preliminary testing of Human Breast lysate, and approx. 40kDa in preliminary testing of U251 and MCF7 cell lysate (calculated MW of 30.8kDa according to NP_658982.1 and 41.0kDa according to NP_036320.2). Recommended concentration: 1-3µg/ml. Primary incubation 1 hour at room temperature.
<b>Application Type</b>	Pep-ELISA, WB, IHC

## DOCUMENTS

- [Data Sheet](#)

## GALLERY IMAGES

