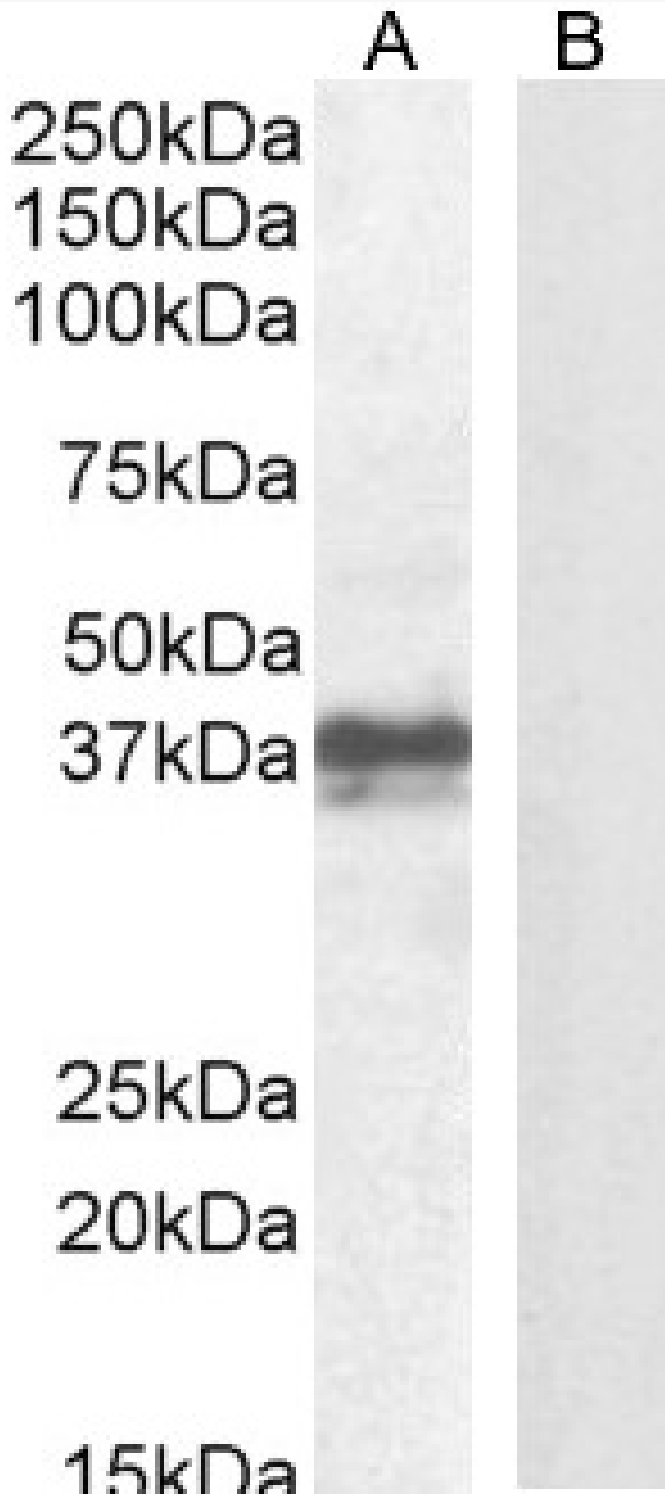


# GOAT ANTI-FOXI3 (MOUSE) ANTIBODY

**SKU:** EB10760



## SPECIFICATIONS

<b>Formulation</b>	Supplied at 0.5 mg/ml in Tris saline, 0.02% sodium azide, pH7.3 with 0.5% bovine serum albumin.
<b>Unit Size</b>	100 µg
<b>Storage</b>	Aliquot and store at -20°C. Minimize freezing and thawing.
<b>Instructions</b>	
<b>Synonym /</b>	
<b>Alias</b>	forkhead box protein I3  forkhead box I3 Foxi3
<b>Names</b>	
<b>Accession ID</b>	NP_001094934.1
<b>Blocking Peptide</b>	EBP10760
<b>Immunogen</b>	Peptide with sequence C-RLRVSGKLEGDSPS, from the internal region of the protein sequence according to NP_001094934.1.
<b>Peptide Sequence</b>	C-RLRVSGKLEGDSPS
<b>Purification Method</b>	Purified from goat serum by ammonium sulphate precipitation followed by antigen affinity chromatography using the immunizing peptide.
<b>Shipping Instructions</b>	Refrigerated
<b>Predicted Species</b>	Mouse, Rat
<b>Reactive Species</b>	Mouse, Rat
<b>Mouse Gene ID</b>	232077
<b>Rat Gene ID</b>	502846
<b>Product Grade</b>	<a href="https://prod-vector-labs-pimcore-assets.s3.us-east-1.amazonaws.com/assets/products/image/elite_medium.png">https://prod-vector-labs-pimcore-assets.s3.us-east-1.amazonaws.com/assets/products/image/elite_medium.png</a>
<b>ELISA</b>	
<b>Detection Limit</b>	Antibody detection limit dilution 1:8000.
<b>Western Blot</b>	Approx 37-38kDa band observed in Mouse and Rat Skin lysates (calculated MW of 42.0kDa according to Mouse NP_001094934.1 and 41.9kDa according to Rat NP_001102819.1). This band was successfully blocked by incubation with the immunizing peptide.. Recommended concentration: 1-3µg/ml. Primary incubation 1 hour at room temperature.
<b>Application Type</b>	Pep-ELISA, WB

## DOCUMENTS

- [Data Sheet](#)

## GALLERY IMAGES

