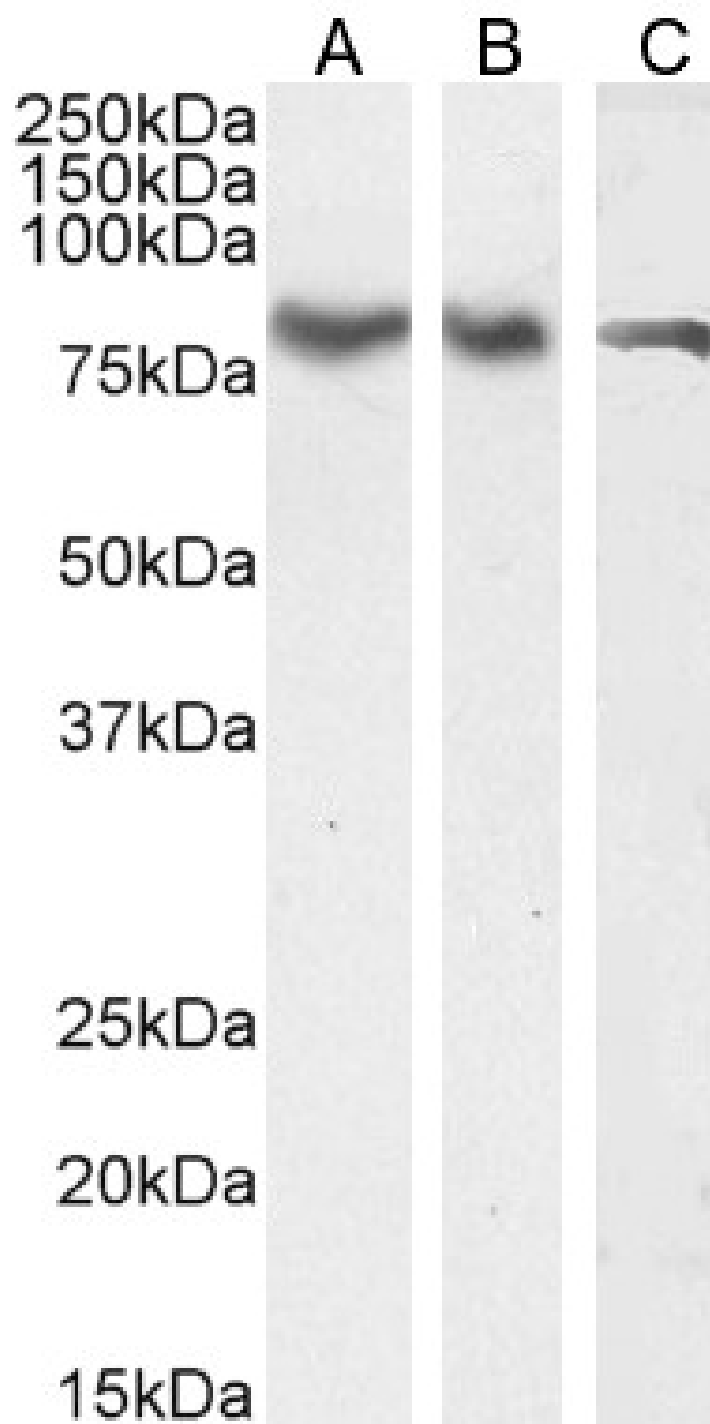


GOAT ANTI-FOXK2 / ILF (ISOFORM 1) ANTIBODY

SKU: EB06034



SPECIFICATIONS

Formulation	Supplied at 0.5 mg/ml in Tris saline, 0.02% sodium azide, pH7.3 with 0.5% bovine serum albumin.
Unit Size	100 µg
Storage Instructions	Aliquot and store at -20°C. Minimize freezing and thawing.
Synonym / Alias Names	forkhead box K2 cellular transcription factor ILF-1 interleukin enhancer binding factor 1 ILF-1 ILF FOXK2 ILF1
Usage Summary	<p>Immunofluorescence: Strong expression of the protein seen in the nuclei and cytoplasmic/vesicles of U2OS and HeLa cells. Recommended concentration: 10µg/ml. <p>Flow Cytometry: Flow cytometric analysis of HeLa cells. Recommended concentration: 10ug/ml.</p></p>
Accession ID	NP_004505.2;
Blocking Peptide	EBP06034
Immunogen	Peptide with sequence C-TPPAVREKGVQN, from the C Terminus of the protein sequence according to NP_004505.2;.
Peptide Sequence	C-TPPAVREKGVQN
Purification Method	Purified from goat serum by ammonium sulphate precipitation followed by antigen affinity chromatography using the immunizing peptide.
Shipping Instructions	Refrigerated
Predicted Species	Human
Reactive Species	Human
Human Gene ID	3607
Product Grade	https://prod-vector-labs-pimcore-assets.s3.us-east-1.amazonaws.com/assets/products/image/elite_plus_medium.png
ELISA Detection Limit	Antibody detection limit dilution 1:32000.
Western Blot	Approx 80kDa band observed in nuclear lysates of cell lines HEK293, HeLa and Jurkat (calculated MW of 69.1kDa according to NP_004505.2.) This molecular weight is routinely observed by other sources and was successfully blocked by incubation with the immunizing peptide. Recommended concentration: 0.01-0.03µg/ml. Primary incubation 1 hour at room temperature.
Application Type	Pep-ELISA, WB, IF, FC

DOCUMENTS

- [Data Sheet](#)

GALLERY IMAGES

