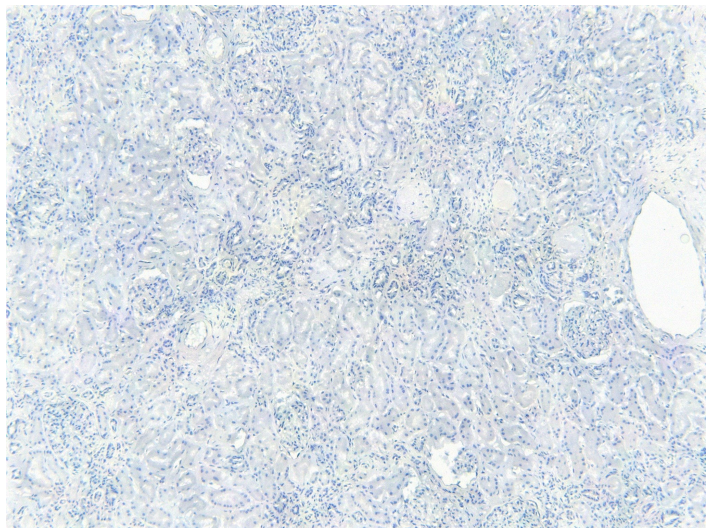


GOAT ANTI-FOXO3A / FOXO3 / FKHRL1 ANTIBODY

SKU: EB06392



SPECIFICATIONS

Formulation	Supplied at 0.5 mg/ml in Tris saline, 0.02% sodium azide, pH7.3 with 0.5% bovine serum albumin.
Unit Size	100 µg
Storage Instructions	Aliquot and store at -20°C. Minimize freezing and thawing.
Synonym / Alias Names	forkhead, Drosophila, homolog of, in rhabdomyosarcoma-like 1 forkhead homolog (rhabdomyosarcoma) like 1 FOXO2 forkhead box O3 FOXO3 forkhead, Drosophila, homolog of, in rhabdomyosarcoma-like 1 forkhead (Drosophila) homolog (rhabdomyosarcoma) like 1 forkhead box O3A DKFZp781A0677 MGC31925 MGC12739 FKHRL1P2 AF6q21 FKHRL1 FOXO3A
Accession ID	NP_001446.1
Blocking Peptide	EBP06392
Immunogen	Peptide with sequence C-GAKQASSQSWVPG, from the C Terminus of the protein sequence according to NP_001446.1.
Product Comments	Both variants represent identical protein (NP_001446.1 and NP_963853.1).
Peptide Sequence	C-GAKQASSQSWVPG
Purification Method	Purified from goat serum by ammonium sulphate precipitation followed by antigen affinity chromatography using the immunizing peptide.

Shipping Instructions	Refrigerated
Predicted Species	Human, Mouse, Rat, Dog, Pig, Cow
Reactive Species	Human
Human Gene ID	2309
Mouse Gene ID	56484
Product Grade	https://prod-vector-labs-pimcore-assets.s3.us-east-1.amazonaws.com/assets/products/image/elite_medium.png
IHC Results	Paraffin embedded Human Kidney. Recommended concentration: 5µg/ml.
ELISA	
Detection Limit	Antibody detection limit dilution 1:8000.
Western Blot	Approx 70kDa band observed in Human Heart lysates (calculated MW of 71.3kDa according to NP_001446.1). Recommended concentration: 0.1-1 µg/ml. Primary incubation was 1 hour. Preliminary testing was unsuccessful on Mouse for this particular batch.
Application Type	Pep-ELISA, WB, IHC

DOCUMENTS

- [Data Sheet](#)

GALLERY IMAGES

