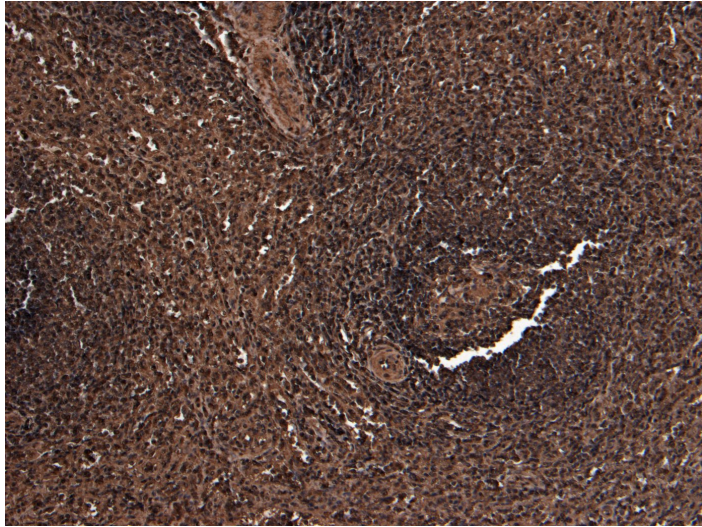




GOAT ANTI-FOXP3 / SCURFIN ANTIBODY

SKU: EB05294



SPECIFICATIONS

Formulation	Supplied at 0.5 mg/ml in Tris saline, 0.02% sodium azide, pH7.3 with 0.5% bovine serum albumin.
Unit Size	100 µg
Storage Instructions	Aliquot and store at -20°C. Minimize freezing and thawing.
Synonym / Alias Names	scurfin FOXP3delta7 MGC141963 MGC141961 immune dysregulation, polyendocrinopathy, enteropathy, X-linked immunodeficiency, polyendocrinopathy, enteropathy, X-linked JM2 protein DIETER XPID PIDX IPEX AIID JM2 forkhead box P3 SCURFIN FOXP3
Usage Summary	<p>Immunofluorescence: Strong expression of the protein seen in the nucleoplasm of U2OS cells.</p> <p>Flow Cytometry: Flow cytometric analysis of Jurkat cells. Recommended concentration: 10µg/ml.</p> <p>Immunocytochemistry: CD25-sorted (Treg) Human blood cells with nuclear speckled staining. Recommended concentration 2-4ug/ml for overnight staining.</p>
Accession ID	NP_054728.2; NP_001107849.1
Blocking Peptide	EBP05294
Immunogen	Peptide with sequence SQRPSRCSNPTPGP, from the C Terminus of the protein sequence according to NP_054728.2; NP_001107849.1.
Product Comments	This antibody is expected to recognize both reported isoforms (NP_054728.2 and NP_001107849.1)

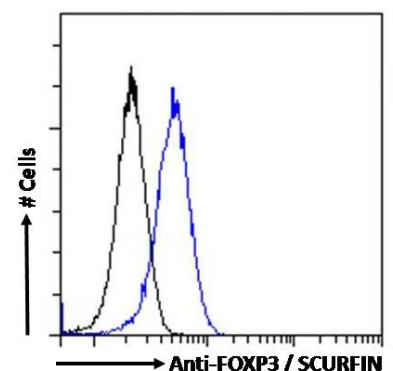
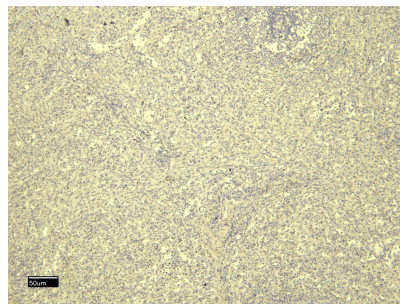
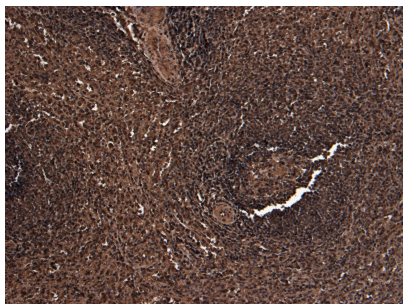


Peptide Sequence	SQRPSRCSNPTPGP
Purification Method	Purified from goat serum by ammonium sulphate precipitation followed by antigen affinity chromatography using the immunizing peptide.
Shipping Instructions	Refrigerated
Predicted Species	Human
Reactive Species	Human
Human Gene ID	50943
Product Grade	https://prod-vector-labs-pimcore-assets.s3.us-east-1.amazonaws.com/assets/products/image/elite_plus_medium.png
IHC Results	Paraffin embedded Human Spleen. Recommended concentration: 6-8µg/ml.
ELISA Detection Limit	Antibody detection limit dilution 1:8000.
Western Blot	Approx 48-50kDa band observed in Human Muscle lysates and in lysates of cell line MOLT4 (calculated MW of 47.2kDa according to NP_054728.2). Recommended concentration: 1-3µg/ml. Primary incubation 1 hour at room temperature. Negative Control: Human Pancreas lysate.
Application Type	Pep-ELISA, WB, IF, FC, ICC, IHC

DOCUMENTS

- [Data Sheet](#)

GALLERY IMAGES





www.everestbiotech.com

Email: customerservice@vectorlabs.com

Telephone: [\(650\) 697-3600](tel:(650)697-3600)

