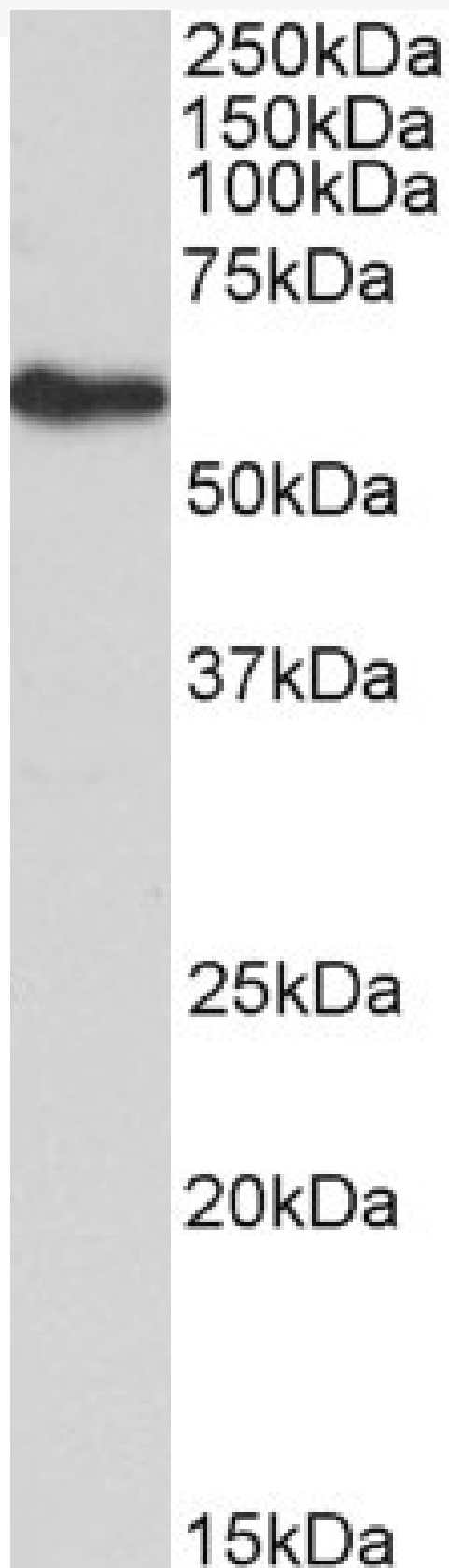


GOAT ANTI-FRS2 ANTIBODY

SKU: EB12615



SPECIFICATIONS

Formulation	Supplied at 0.5 mg/ml in Tris saline, 0.02% sodium azide, pH7.3 with 0.5% bovine serum albumin.
Unit Size	100 µg
Storage Instructions	Aliquot and store at -20°C. Minimize freezing and thawing.
Synonym / Alias Names	suc1-associated neurotrophic factor target 1 FGFR-signaling adaptor SNT FGFR substrate 2 FGFR signalling adaptor SNT1 SNT-1 SNT FRS2alpha FRS2A fibroblast growth factor receptor substrate 2 FRS2
Accession ID	NP_006645.3
Blocking Peptide	EBP12615
Immunogen	Peptide with sequence C-SRDEDDNLGPKTPS, from the internal region of the protein sequence according to NP_006645.3.
Product Comments	Reported variants represent identical protein: NP_001265284.1, NP_001265286.1, NP_001265283.1, NP_001265285.1, NP_001265282.1, NP_006645.3, NP_001036020.1, NP_001265280.1
Peptide Sequence	C-SRDEDDNLGPKTPS
Purification Method	Purified from goat serum by ammonium sulphate precipitation followed by antigen affinity chromatography using the immunizing peptide.
Shipping Instructions	Refrigerated
Predicted Species	Human, Mouse, Dog, Pig, Cow
Reactive Species	Mouse
Human Gene ID	10818
Mouse Gene ID	327826
Product Grade	https://prod-vector-labs-pimcore-assets.s3.us-east-1.amazonaws.com/assets/products/image/elite_medium.png
ELISA Detection Limit	Antibody detection limit dilution 1:128000.
Western Blot	Approx 60kDa band observed in lysates of undifferentiated cell line 3T3-L1 (calculated MW of 57.0kDa according to NP_006645.3). Recommended concentration: 0.1-0.3µg/ml. Primary incubation was 1 hour. Preliminary testing was unsuccessful on Human and Pig for this particular batch.
Application Type	Pep-ELISA, WB

DOCUMENTS

- [Data Sheet](#)

GALLERY IMAGES

