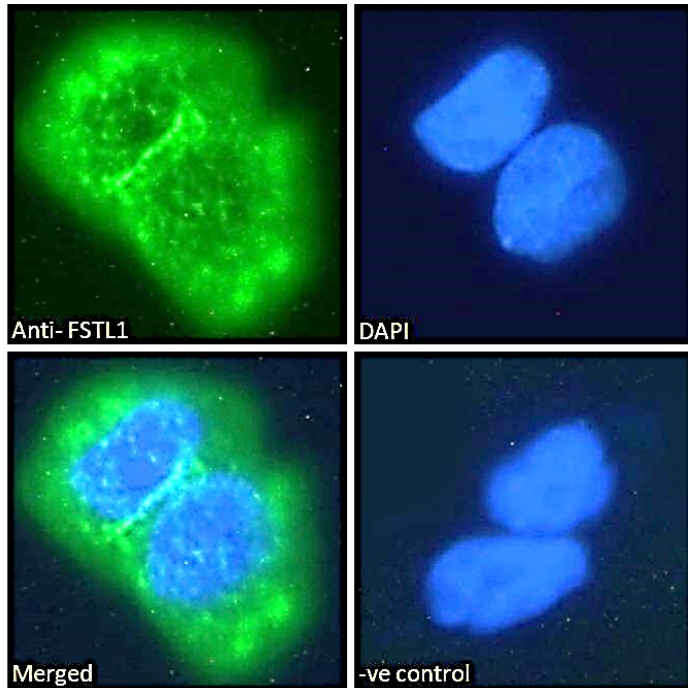




# GOAT ANTI-FSTL1 ANTIBODY

SKU: EB05588



## SPECIFICATIONS

**Formulation** Supplied at 0.5 mg/ml in Tris saline, 0.02% sodium azide, pH7.3 with 0.5% bovine serum albumin.

**Unit Size** 100 µg

**Storage Instructions** Aliquot and store at -20°C. Minimize freezing and thawing.

**Synonym /**

**Alias** FLJ52277|FLJ50214|follistatin-related protein|FSL1|FRP|follistatin-like 1|FSTL1

**Names**

**Usage Summary** **Immunofluorescence:** Strong expression of the protein seen in the cytoplasm and vesicles of A431 cells. Recommended concentration: 10µg/ml. **Flow Cytometry:** Flow cytometric analysis of A549 cells. Recommended concentration: 10ug/ml.

**Accession ID** NP\_009016.1

**Blocking Peptide** EBP05588

**Immunogen** Peptide with sequence C-TAEKTKRVSTKEI, from the C Terminus of the protein sequence according to NP\_009016.1.



|                              |  |
|------------------------------|--|
| <b>Peptide Sequence</b>      | C-TAEKTKRVSTKEI  |
| <b>Purification Method</b>   | Purified from goat serum by ammonium sulphate precipitation followed by antigen affinity chromatography using the immunizing peptide.  |
| <b>Shipping Instructions</b> | Refrigerated   |
| <b>Predicted Species</b>     | Human  |
| <b>Reactive Species</b>      | Human  |
| <b>Human Gene ID</b>         | 11167  |
| <b>Product Grade</b>         | <a href="https://prod-vector-labs-pimcore-assets.s3.us-east-1.amazonaws.com/assets/products/image/elite_plus_medium.png">https://prod-vector-labs-pimcore-assets.s3.us-east-1.amazonaws.com/assets/products/image/elite_plus_medium.png</a>  |
| <b>ELISA Detection Limit</b> | Antibody detection limit dilution 1:16000.   |
| <b>Western Blot</b>          | Approx 50kDa band observed in Human Ovary lysates. (calculated MW of 35.0kDa according to NP_009016.1). This band corresponds to earlier findings from other sources and was successfully blocked by incubation with the immunizing peptide. Recommended concentration: 0.3-1µg/ml. Primary incubation 1 hour at room temperature. |
| <b>Application Type</b>      | Pep-ELISA, WB, IF, FC  |

## DOCUMENTS

- [Data Sheet](#)

## GALLERY IMAGES

