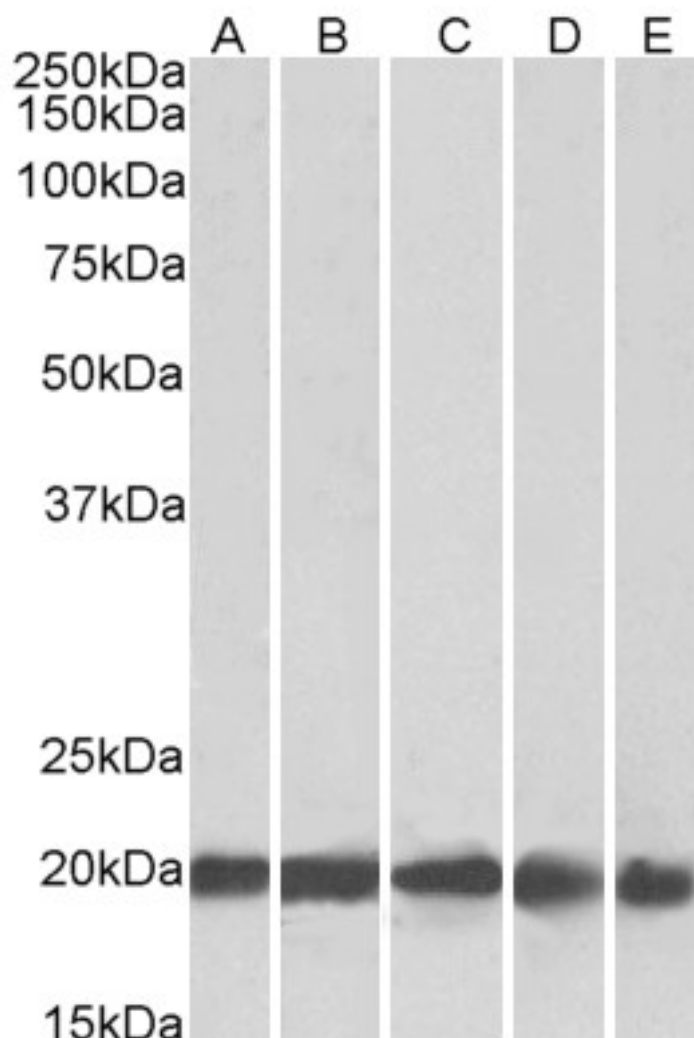


GOAT ANTI-FTL ANTIBODY

SKU: EB09092



SPECIFICATIONS

Formulation Supplied at 0.5 mg/ml in Tris saline, 0.02% sodium azide, pH7.3 with 0.5% bovine serum albumin.

Unit Size 100 µg

Storage Aliquot and store at -20°C. Minimize freezing and thawing.

Instructions

Synonym / Alias Names	NBIA3 LFTD ferritin light polypeptide-like 3 ferritin light chain ferritin L-chain ferritin L subunit L apoferritin MGC71996 ferritin, light polypeptide FTL
Accession ID	NP_000137.2
Blocking Peptide	EBP09092
Immunogen	Peptide with sequence C-GEYLFERLTKHD, from the C Terminus of the protein sequence according to NP_000137.2.
Peptide Sequence	C-GEYLFERLTKHD
Purification Method	Purified from goat serum by ammonium sulphate precipitation followed by antigen affinity chromatography using the immunizing peptide.
Shipping Instructions	Refrigerated
Predicted Species	Human, Mouse, Rat, Dog, Cow
Reactive Species	Human, Mouse, Rat
Human Gene ID	2512
Mouse Gene ID	14325
Rat Gene ID	29292
Product Grade	https://prod-vector-labs-pimcore-assets.s3.us-east-1.amazonaws.com/assets/products/image/elite_medium.png
IHC Results	Paraffin embedded Human Spleen. Recommended concentration: 4-6µg/ml.
ELISA Detection Limit	Antibody detection limit dilution 1:32000.
Western Blot	Approx. 20kDa band observed in Human Brain (Cerebellum), Liver, Placenta and 22kDa in Mouse and Rat Brain lysates (calculated MW of 20.0kDa according to NP_000137.2). Recommended concentration: 0.3-1.0µg/ml. Primary incubation was 1 hour.
Application Type	Pep-ELISA, WB, IHC

DOCUMENTS

- [Data Sheet](#)

GALLERY IMAGES

