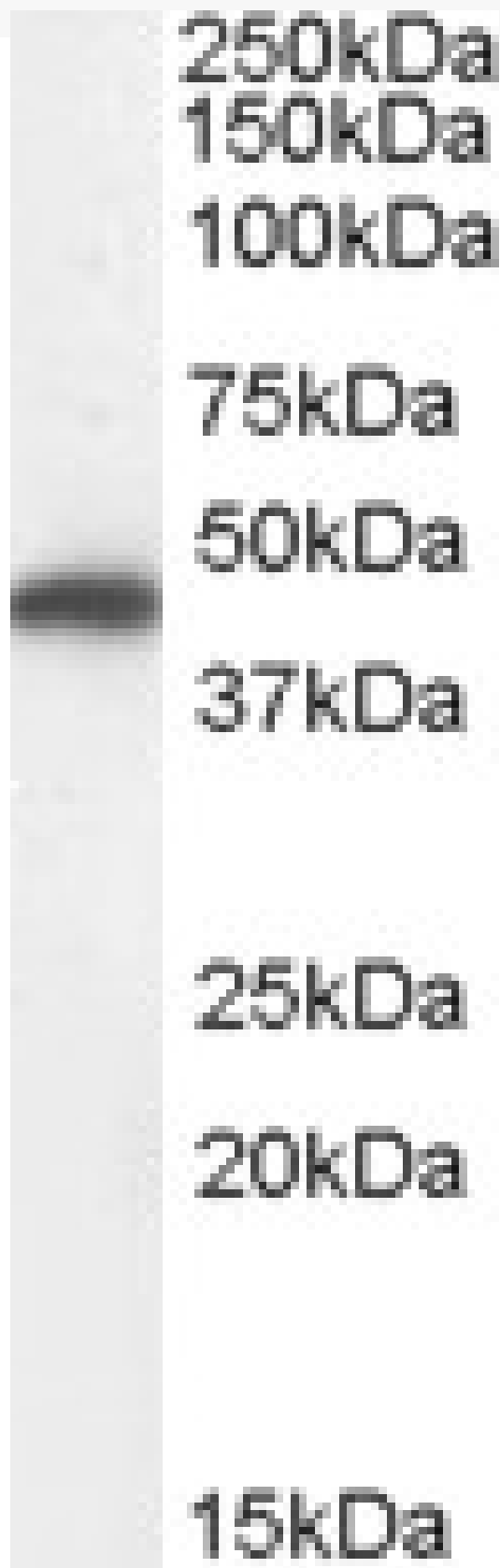


GOAT ANTI-FUMARASE / FH ANTIBODY

SKU: EB07874



SPECIFICATIONS

Formulation Supplied at 0.5 mg/ml in Tris saline, 0.02% sodium azide, pH7.3 with 0.5% bovine serum albumin.

Unit Size 100 µg

Storage Instructions Aliquot and store at -20°C. Minimize freezing and thawing.

Synonym /

Alias Names FMRD|FH|fumarase|MCL|LRCC|HLRCC|fumarate hydratase

Accession

ID NP_000134.2

Blocking Peptide EBP07874

Immunogen Peptide with sequence C-HPNDHVNKSQSSND, from the internal region of the protein sequence according to NP_000134.2.

Peptide Sequence C-HPNDHVNKSQSSND

Purification Method Purified from goat serum by ammonium sulphate precipitation followed by antigen affinity chromatography using the immunizing peptide.

Shipping Instructions Refrigerated

Predicted Species Human, Mouse, Rat, Dog

Reactive Species Human

Human Gene ID 2271

Mouse Gene ID 14194

Rat Gene ID 24368

Product Grade https://prod-vector-labs-pimcore-assets.s3.us-east-1.amazonaws.com/assets/products/image/elite_medium.png

IHC Results Paraffin embedded Human Skeletal Muscle and Heart. Recommended concentration: 3.75µg/ml.

ELISA

Detection Limit Antibody detection limit dilution 1:64000.

Western Blot Approx 48kDa band observed in Human Kidney, Liver and Lung lysates (calculated MW of 54.6kDa according to NP_000134.2). The observed molecular weight corresponds to earlier findings with antibodies from different sources. Recommended concentration: 0.01-0.03µg/ml. Primary incubation was 1 hour.

Application Type Pep-ELISA, WB, IHC

DOCUMENTS

- [Data Sheet](#)

GALLERY IMAGES

