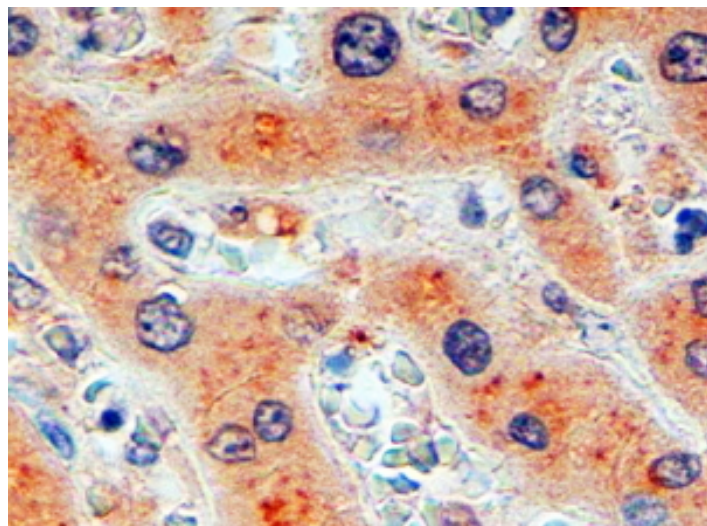


GOAT ANTI-FURIN (AA553-565) ANTIBODY

SKU: EB11525



SPECIFICATIONS

Formulation	Supplied at 0.5 mg/ml in Tris saline, 0.02% sodium azide, pH7.3 with 0.5% bovine serum albumin.
Unit Size	100 µg
Storage	Aliquot and store at -20°C. Minimize freezing and thawing.
Instructions	
Synonym / Alias	SPC1 proprotein convertase subtilisin/kexin type 3 PCSK3 paired basic amino acid residue-cleaving enzyme PACE OTTHUMP00000194747 furin, membrane associated receptor protein furin (paired basic amino acid cleaving enzyme) FURIN FUR FES upstream region dibasic-processing enzyme dibasic processing enzyme
Names	
Accession ID	NP_002560.1
Blocking Peptide	EBP11525
Immunogen	Peptide with sequence C-NTSEANNYGTLTK, from the internal region of the protein sequence according to NP_002560.1.
Peptide Sequence	C-NTSEANNYGTLTK
Purification Method	Purified from goat serum by ammonium sulphate precipitation followed by antigen affinity chromatography using the immunizing peptide.
Shipping Instructions	Refrigerated

Predicted Species	Human, Mouse, Rat, Dog, Pig, Cow
Reactive Species	Human
Human Gene ID	5045
Mouse Gene ID	18550
Rat Gene ID	54281
Product Grade	https://prod-vector-labs-pimcore-assets.s3.us-east-1.amazonaws.com/assets/products/image/elite_medium.png
IHC Results	In paraffin embedded Human Liver shows Golgi-like staining in the hepatocytes. Recommended concentration, 2-4µg/ml.
ELISA Detection Limit	Antibody detection limit dilution 1:8000.
Western Blot	This antibody is proven unfit for Western blot.
Application Type	Pep-ELISA, IHC

DOCUMENTS

- [Data Sheet](#)

GALLERY IMAGES

