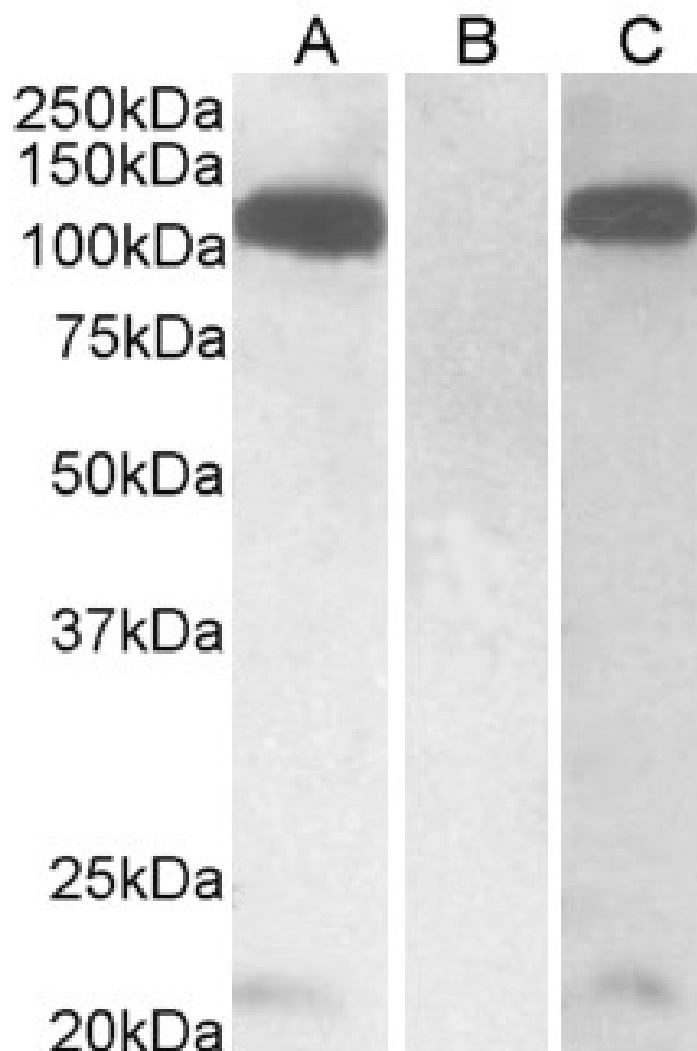


GOAT ANTI-FURIN (C TERMINUS) ANTIBODY

SKU: EB11526



SPECIFICATIONS

Formulation Supplied at 0.5 mg/ml in Tris saline, 0.02% sodium azide, pH7.3 with 0.5% bovine serum albumin.

Unit Size 100 µg

Storage Aliquot and store at -20°C. Minimize freezing and thawing.

Instructions

Synonym / Alias Names	SPC1 proprotein convertase subtilisin/kexin type 3 PCSK3 paired basic amino acid residue-cleaving enzyme PACE OTTHUMP00000194747 furin, membrane associated receptor protein furin (paired basic amino acid cleaving enzyme) FURIN FUR FES upstream region dibasic-processing enzyme dibasic processing enzyme
Accession ID	NP_002560.1
Blocking Peptide	EBP11526
Immunogen	Peptide with sequence C-EDEGRGERTAFIKDQ, from the C Terminus of the protein sequence according to NP_002560.1.
Peptide Sequence	C-EDEGRGERTAFIKDQ
Purification Method	Purified from goat serum by ammonium sulphate precipitation followed by antigen affinity chromatography using the immunizing peptide.
Shipping Instructions	Refrigerated
Predicted Species	Human, Mouse, Rat, Dog, Pig, Cow
Reactive Species	Human
Human Gene ID	5045
Mouse Gene ID	18550
Rat Gene ID	54281
Product Grade	https://prod-vector-labs-pimcore-assets.s3.us-east-1.amazonaws.com/assets/products/image/elite_medium.png
ELISA Detection Limit	Antibody detection limit dilution 1:128000.
Western Blot	In transfected HEK293 transiently expressing Human Furin (myc and DYKDDDDK tagged), a band of approx. 110kDa is observed. No bands are observed in mock-transfected HEK293 and the same band is observed using anti-myc antibody. Recommended concentration, 0.01-0.03µg/ml.
Application Type	Pep-ELISA, WB-Trf

DOCUMENTS

- [Data Sheet](#)

GALLERY IMAGES

