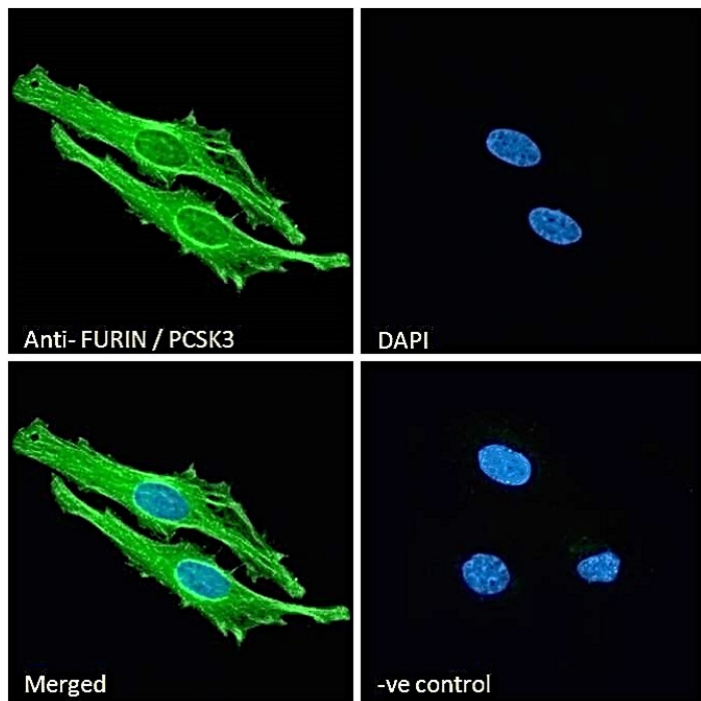


## GOAT ANTI-FURIN / PCSK3 ANTIBODY

SKU: EB08896



## SPECIFICATIONS

**Formulation** Supplied at 0.5 mg/ml in Tris saline, 0.02% sodium azide, pH7.3 with 0.5% bovine serum albumin.

**Unit Size** 100 µg

**Storage Instructions** Aliquot and store at -20°C. Minimize freezing and thawing.

**Synonym / Alias Names** proprotein convertase subtilisin/kexin type 3|paired basic amino acid cleaving enzyme (furin, membrane associated receptor protein)|furin, membrane associated receptor protein|furin|dibasic processing enzyme|FES upstream region|SPC1|PCSK3|PACE|FUR|furin (paired basic amino acid cleaving enzyme)|FURIN

**Usage Summary** **Immunofluorescence:** Strong expression of the protein seen in the plasma membrane and ER/cytoplasm of HeLa cells, and additionally the nucleus of U2OS cells. Recommended concentration: 10µg/ml.

**Accession ID** NP\_002560.1

**Blocking Peptide** EBP08896

**Immunogen** Peptide with sequence C-RTKRDVYQEPTDP, from the internal region of the protein sequence according to NP\_002560.1.

<b>Peptide Sequence</b>	C-RTKRDVYQEPTDP
<b>Purification Method</b>	Purified from goat serum by ammonium sulphate precipitation followed by antigen affinity chromatography using the immunizing peptide.
<b>Shipping Instructions</b>	Refrigerated
<b>Predicted Species</b>	Human, Mouse, Rat
<b>Reactive Species</b>	Human
<b>Human Gene ID</b>	5045
<b>Product Grade</b>	<a href="https://prod-vector-labs-pimcore-assets.s3.us-east-1.amazonaws.com/assets/products/image/elite_medium.png">https://prod-vector-labs-pimcore-assets.s3.us-east-1.amazonaws.com/assets/products/image/elite_medium.png</a>
<b>ELISA Detection Limit</b>	Antibody detection limit dilution 1:32000.
<b>Application Type</b>	Pep-ELISA, IF

## DOCUMENTS

- [Data Sheet](#)

## GALLERY IMAGES

