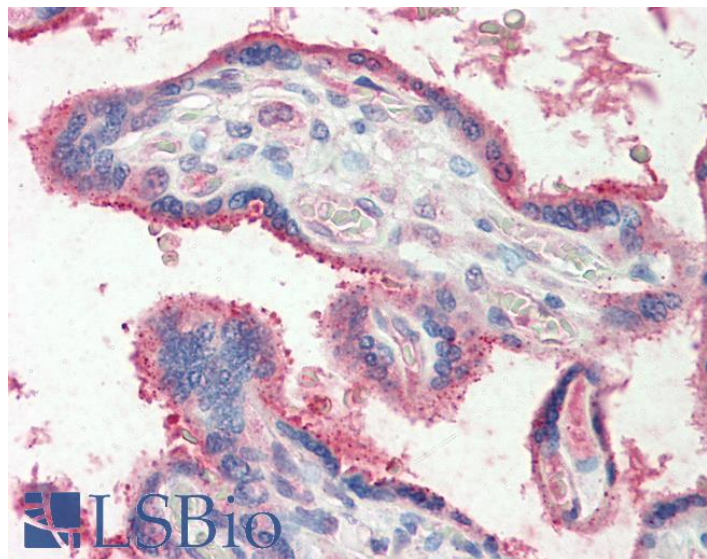


GOAT ANTI-FUT2 ANTIBODY

SKU: EB10981



SPECIFICATIONS

Formulation	Supplied at 0.5 mg/ml in Tris saline, 0.02% sodium azide, pH7.3 with 0.5% bovine serum albumin.
Unit Size	100 µg
Storage Instructions	Aliquot and store at -20°C. Minimize freezing and thawing.
Synonym / Alias Names	galactoside 2-alpha-L-fucosyltransferase 2 alpha(1, 2)FT2 alpha (1, 2) fucosyltransferase GDP-L-fucose:beta-D-galactoside 2-alpha-L-fucosyltransferase 2 sej Se2 SEC2 SE B12QTL1 fucosyltransferase 2 (secretor status included) FUT2
Accession ID	NP_000502.4
Blocking Peptide	EBP10981
Immunogen	Peptide with sequence C-HVQQLAKIQAMWE, from the internal region (near N Terminus) of the protein sequence according to NP_000502.4.
Product Comments	Reported variants represent identical protein: NP_001091107.1, NP_000502.4
Peptide Sequence	C-HVQQLAKIQAMWE
Purification Method	Purified from goat serum by ammonium sulphate precipitation followed by antigen affinity chromatography using the immunizing peptide.

Shipping Instructions	Refrigerated
Predicted Species	Human
Reactive Species	Human
Human Gene ID	2524
Product Grade	https://prod-vector-labs-pimcore-assets.s3.us-east-1.amazonaws.com/assets/products/image/elite_medium.png
IHC Results	Paraffin embedded Human Placenta. Recommended concentration: 5µg/ml.
ELISA	
Detection Limit	Antibody detection limit dilution 1:64000.
Western Blot	Approx 37kDa band observed in Human Liver lysates (calculated MW of 39.0kDa according to NP_000502.4. Recommended concentration: 1-3µg/ml. Primary incubation was 1 hour.
Application Type	Pep-ELISA, WB, IHC

DOCUMENTS

- [Data Sheet](#)

GALLERY IMAGES

