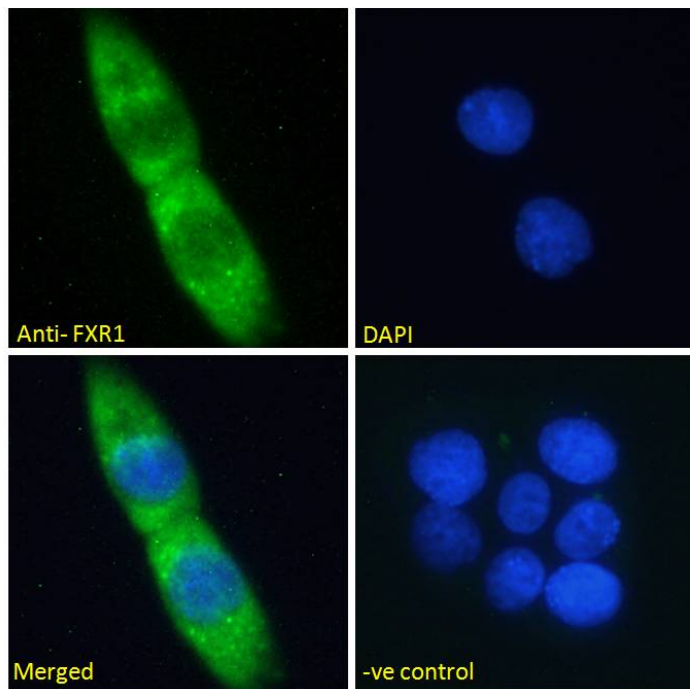


GOAT ANTI-FXR1 ANTIBODY

SKU: EB07361



SPECIFICATIONS

Formulation Supplied at 0.5 mg/ml in Tris saline, 0.02% sodium azide, pH7.3 with 0.5% bovine serum albumin.

Unit Size 100 µg

Storage Instructions Aliquot and store at -20°C. Minimize freezing and thawing.

Synonym /

Alias Names fragile X mental retardation-related protein 1|fragile X mental retardation, autosomal homolog 1|FXR1

Usage Summary **Immunofluorescence:** Strong expression of the protein seen in the cytoplasm of A431 and HeLa cells. Recommended concentration: 10µg/ml. **Flow Cytometry:** Flow cytometric analysis of HeLa cells. Recommended concentration: 10ug/ml.

Accession ID NP_005078.2; NP_001013456.1; NP_001013457.1

Blocking Peptide EBP07361

Immunogen Peptide with sequence C-RIEGDNENKLPRED, from the internal region of the protein sequence according to NP_005078.2; NP_001013456.1; NP_001013457.1.

Product Comments	This antibody is expected to recognise all reported isoforms (NP_005078.2, NP_001013456.1 and NP_001013457.1).
Peptide Sequence	C-RIEGDNENKLPRED
Purification Method	Purified from goat serum by ammonium sulphate precipitation followed by antigen affinity chromatography using the immunizing peptide.
Shipping Instructions	Refrigerated
Predicted Species	Human, Mouse, Rat, Dog, Cow
Reactive Species	Human, Mouse
Human Gene ID	8087
Mouse Gene ID	14359
Rat Gene ID	361927
Product Grade	https://prod-vector-labs-pimcore-assets.s3.us-east-1.amazonaws.com/assets/products/image/elite_plus_medium.png
ELISA Detection Limit	Antibody detection limit dilution 1:128000.
Western Blot	Approx 75+80kDa band observed in lysates of cell line NIH-3T3 (calculated MW of 59.9kDa according to NP_001013457.1). The observed molecular weight corresponds to earlier findings in literature (Khandjian et al Hum Mol Genet. 1998 Dec;7(13):2121-8.; PMID: 9817930). An additional band of unknown identity was also consistently observed at 37kDa. This band was successfully blocked by incubation with the immunizing peptide. Recommended concentration. 1-3µg/ml. Primary incubation 1 hour at room temperature.
Application Type	Pep-ELISA, WB, IF, FC

DOCUMENTS

- [Data Sheet](#)

GALLERY IMAGES

