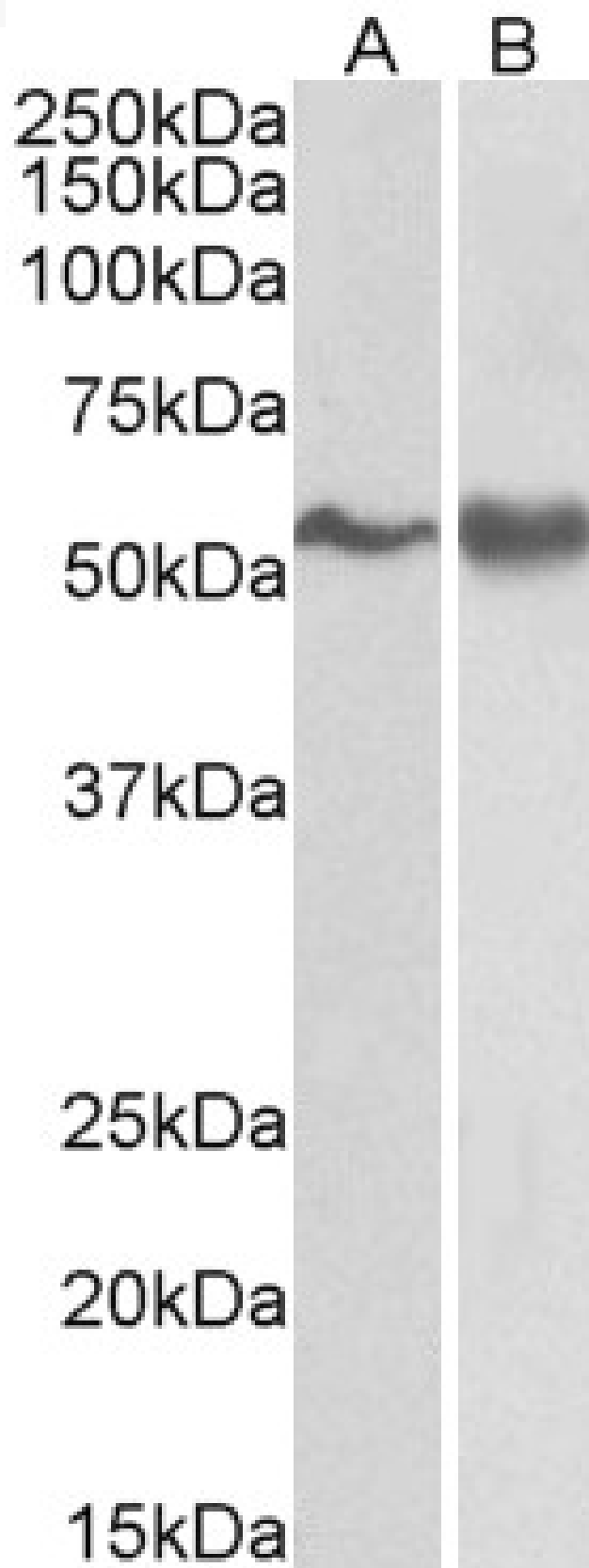


GOAT ANTI-FYN ANTIBODY

SKU: EB05153



SPECIFICATIONS

Formulation	Supplied at 0.5 mg/ml in Tris saline, 0.02% sodium azide, pH7.3 with 0.5% bovine serum albumin.
Unit Size	100 µg
Storage Instructions	Aliquot and store at -20°C. Minimize freezing and thawing.
Synonym / Alias Names	src-like kinase protein-tyrosine kinase fyn OTTHUMP00000017917 RP1-66H14.1 proto-oncogene tyrosine-protein kinase fyn OKT3-induced calcium influx regulator src/yes-related novel gene tyrosine kinase p59fyn(T) c-syn protooncogene src-like kinase FYN oncogene related to SRC, FGR, YES MGC45350 SYN SLK FYN
Accession ID	NP_002028.1; NP_694592.1; NP_694593.1
Blocking Peptide	EBP05153
Immunogen	Peptide with sequence VQCKDKEATKLTE, from the N Terminus of the protein sequence according to NP_002028.1; NP_694592.1; NP_694593.1.
Product Comments	This antibody is expected to recognise all three reported isoforms (as represented by NP_002028.1; NP_694592.1; NP_694593.1).
Peptide Sequence	VQCKDKEATKLTE
Purification Method	Purified from goat serum by ammonium sulphate precipitation followed by antigen affinity chromatography using the immunizing peptide.
Shipping Instructions	Refrigerated
Predicted Species	Human, Mouse, Rat, Dog, Pig, Cow
Reactive Species	Human
Human Gene ID	2534
Mouse Gene ID	14360
Rat Gene ID	25150
Product Grade	https://prod-vector-labs-pimcore-assets.s3.us-east-1.amazonaws.com/assets/products/image/elite_medium.png
ELISA Detection Limit	Antibody detection limit dilution 1:32000.
Western Blot	Approx 55kDa band observed in lysates of cell lines A431 and Jurkat (calculated MW of 54.5kDa according to NP_694593.1). Recommended for use at 0.3-1µg/ml.
Application Type	Pep-ELISA, WB

DOCUMENTS

- [Data Sheet](#)

GALLERY IMAGES

