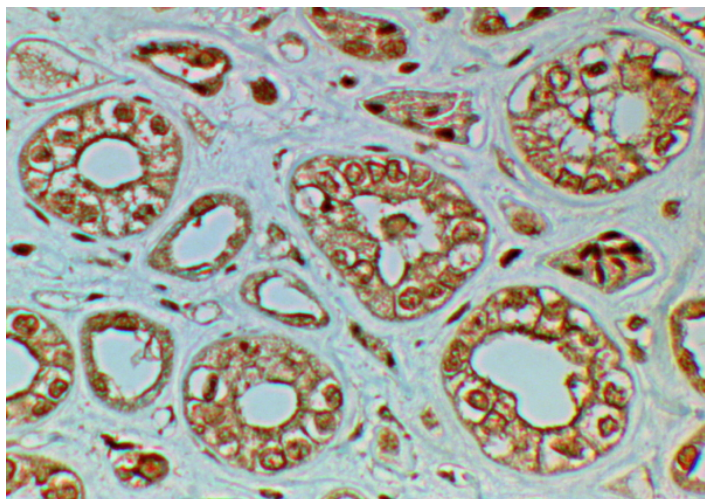


# GOAT ANTI-FZD4 ANTIBODY

**SKU:** EB09241



## SPECIFICATIONS

**Formulation** Supplied at 0.5 mg/ml in Tris saline, 0.02% sodium azide, pH7.3 with 0.5% bovine serum albumin.

**Unit Size** 100 µg

**Storage Instructions** Aliquot and store at -20°C. Minimize freezing and thawing.

**Synonym / Alias Names** frizzled 4|Criswick-Schepens syndrome|exudative vitreoretinopathy 1 (autosomal dominant|WNT receptor frizzled-4|MGC34390|GPCR|FzE4|Fz-4|FZD4S|FEVR|EVR1|CD344|frizzled homolog 4 (Drosophila)|FZD4

**Accession ID** NP\_036325.2

**Blocking Peptide** EBP09241

**Immunogen** Peptide with sequence C-KIRSNLQKDGTKT, from the internal region of the protein sequence according to NP\_036325.2.

**Peptide Sequence** C-KIRSNLQKDGTKT

**Purification Method** Purified from goat serum by ammonium sulphate precipitation followed by antigen affinity chromatography using the immunizing peptide.

**Shipping Instructions** Refrigerated

**Predicted Species** Human, Mouse, Rat

<b>Reactive Species</b>	Human
<b>Human Gene ID</b>	8322
<b>Product Grade</b>	<a href="https://prod-vector-labs-pimcore-assets.s3.us-east-1.amazonaws.com/assets/products/image/elite_medium.png">https://prod-vector-labs-pimcore-assets.s3.us-east-1.amazonaws.com/assets/products/image/elite_medium.png</a>
<b>IHC Results</b>	In paraffin embedded Human Kidney shows membrane staining in convoluted tubules. Recommended concentration, 2-4µg/ml.
<b>ELISA</b>	
<b>Detection Limit</b>	Antibody detection limit dilution 1:32000.
<b>Application Type</b>	Pep-ELISA, IHC

## DOCUMENTS

- [Data Sheet](#)

## GALLERY IMAGES

