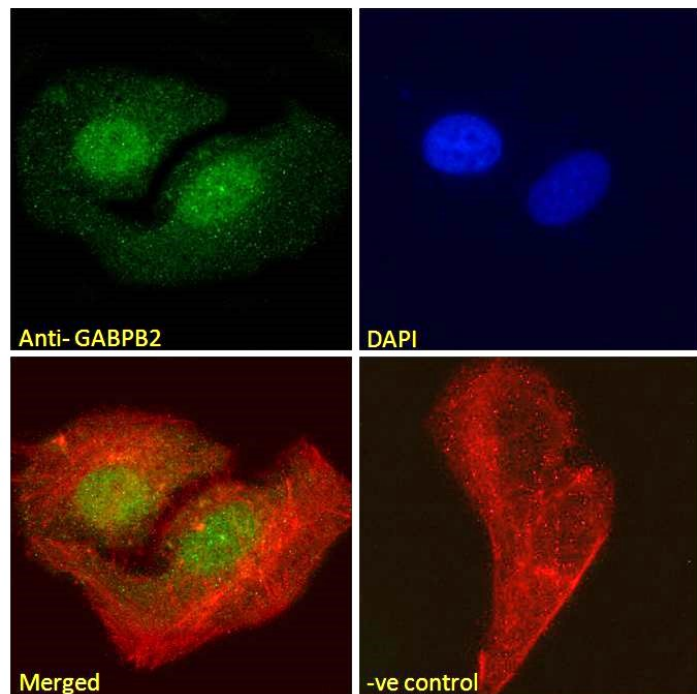


GOAT ANTI-GABPB2 ANTIBODY

SKU: EB07818



SPECIFICATIONS

Formulation Supplied at 0.5 mg/ml in Tris saline, 0.02% sodium azide, pH7.3 with 0.5% bovine serum albumin.

Unit Size 100 µg

Storage Instructions Aliquot and store at -20°C. Minimize freezing and thawing.

Synonym / Alias Names nuclear respiratory factor-2 subunit beta|GA binding protein transcription factor, beta subunit 2, 47kDa|GA binding protein transcription factor, beta subunit 1, 53kDa|NRF2B2|NRF2B1|GABPB1|GABPB|E4TF1B|E4TF1-53|E4TF1-47|E4TF1|BABPB2|GA binding protein transcription factor, beta subunit 2|GABPB2

Usage Summary **Immunofluorescence:** Strong expression of the protein seen in the nuclei of HeLa and U2OS cells. Recommended concentration: 10µg/ml. **Flow Cytometry:** Flow cytometric analysis of HEK293 cells. Recommended concentration: 10ug/ml.

Accession ID NP_005245.2; NP_002032.2; NP_001307844.1

Blocking Peptide EBP07818

Immunogen	Peptide with sequence C-SENSSKATDETG, from the internal region of the protein sequence according to NP_005245.2; NP_002032.2; NP_001307844.1.
Peptide Sequence	C-SENSSKATDETG
Purification Method	Purified from goat serum by ammonium sulphate precipitation followed by antigen affinity chromatography using the immunizing peptide.
Shipping Instructions	Refrigerated
Predicted Species	Human, Dog
Reactive Species	Human
Human Gene ID	2553
Product Grade	https://prod-vector-labs-pimcore-assets.s3.us-east-1.amazonaws.com/assets/products/image/elite_plus_medium.png
IHC Results	Paraffin embedded Human Tonsil and Spleen. Recommended concentration: 3.75µg/ml.
ELISA Detection Limit	Antibody detection limit dilution 1:32000.
Western Blot	Approx 45+38kDa bands observed in lysates of cell line HeLa (calculated MW of 42.5kDa according to NP_005245.2, NP_001307844.1 and of 38.1kDa according to NP_002032.2). An additional band of unknown identity was also consistently observed at 22kDa and was successfully blocked by incubation with the immunising peptide. Recommended concentration: 0.3-1µg/ml. Primary incubation 1 hour at room temperature.
Application Type	Pep-ELISA, WB, IHC, IF, FC

DOCUMENTS

- [Data Sheet](#)

GALLERY IMAGES

