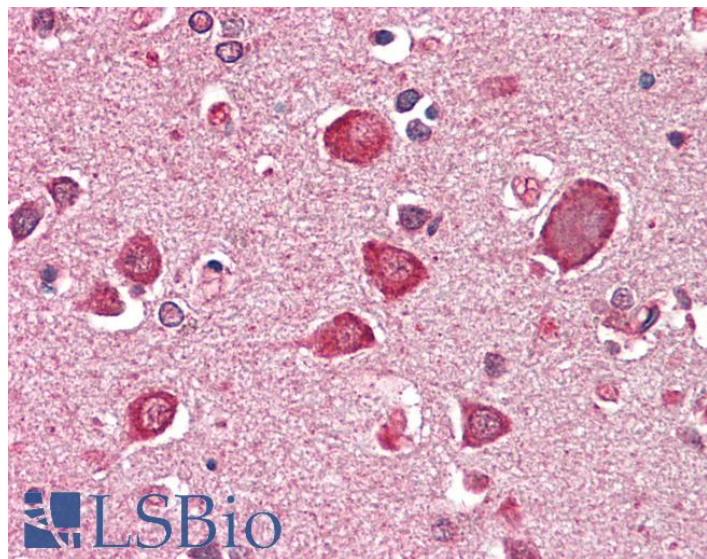


GOAT ANTI-GABRA6 (AA15-26) ANTIBODY

SKU: EB10993



SPECIFICATIONS

Formulation Supplied at 0.5 mg/ml in Tris saline, 0.02% sodium azide, pH7.3 with 0.5% bovine serum albumin.

Unit Size 100 µg

Storage Instructions Aliquot and store at -20°C. Minimize freezing and thawing.

Synonym / Alias Names GABRA6| gamma-aminobutyric acid (GABA) A receptor, alpha 6| MGC116903| MGC116904| GABA subunit A receptor alpha 6| GABA(A) receptor subunit alpha-6| gamma-aminobutyric acid receptor subunit alpha-6

Accession ID NP_000802.2

Blocking Peptide EBP10993

Immunogen Peptide with sequence ENALGKLEVEGN-C, from the N Terminus of the protein sequence according to NP_000802.2.

Peptide Sequence ENALGKLEVEGN-C

Purification Method Purified from goat serum by ammonium sulphate precipitation followed by antigen affinity chromatography using the immunizing peptide.

Shipping Instructions Refrigerated

Predicted Species	Human, Pig, Cow
Reactive Species	Human
Human Gene ID	2559
Product Grade	https://prod-vector-labs-pimcore-assets.s3.us-east-1.amazonaws.com/assets/products/image/elite_medium.png
IHC Results	Paraffin embedded Human Brain (Cortex). Recommended concentration: 5µg/ml.
ELISA Detection Limit	Antibody detection limit dilution 1:32000.
Western Blot	Preliminary experiments gave bands at approx 75kDa and 37kDa in Human Cerebellum lysates after 0.3µg/ml antibody staining. Please note that currently we cannot find an explanation in the literature for the bands we observe given the calculated size of 51.0kDa according to NP_000802.2. Both detected bands were successfully blocked by incubation with the immunizing peptide (and BLAST results with the immunizing peptide sequence did not identify any other proteins to explain the additional bands).
Application Type	Pep-ELISA, IHC

DOCUMENTS

- [Data Sheet](#)

GALLERY IMAGES

